

企业环境介绍

INTRODUCTION TO BUSINESS

随着科技发展的日新月异，当前，全球制造业正处在转型发展的关键时期，以互联网和制造业结合为亮点的工业4.0席卷全球，新一轮科技革命和产业变革加紧孕育兴起。新型工业化、信息化、城镇化、农业现代化同步推进，超大规模内需潜力不断释放，为我国制造业发展提供了广阔空间。

中国制造强国战略的第一个行动纲领，《中国制造2025》提出，坚持“创新驱动、质量为先、绿色发展、结构优化、人才为本”的基本方针，加快推动新一代信息技术与制造技术融合发展，把智能制造作为两化深度融合的主攻方向，全面提升企业研发、生产、管理和服务的智能化水平。在这个信息化、工业化以及智能化共同融合的时代，加速完成制造业智能化升级，实现高效、高品质、节能环保和安全可靠的生产尤为重要。

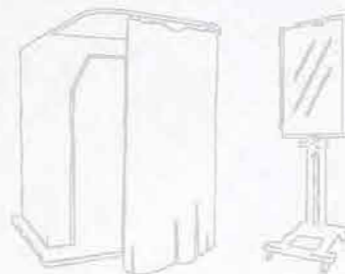
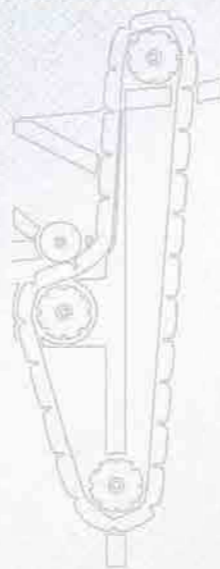
Along with the development of science and technology changes, with each passing day. At present, the global manufacturing industry is in the critical period of transformation and development. Industry 4.0, which combines Internet and manufacturing, has swept the global. A new round of scientific and technological revolution and industrial change is rising. The new type of industrialization, informatization, urbanization, agricultural modernization, and the constant release of the potential of large domestic demand have provided a broad space for the development of China's manufacturing industry.

The first program of action for China manufacturing strategy, [2025] made in China, puts forward, insist on innovation drive, quality first, the green development, structural optimization, the talented person as the basic principle, accelerate the integration development of a new generation of information technology and manufacturing technology, the intelligent manufacturing as the main direction of two mineralization depth fusion, comprehensively improve enterprise research and development, production management and service level of intelligence. In the informatization, industrialization and the era of intelligent mutual fusion, complete manufacturing smart update faster, efficient, high quality, energy conservation, environmental protection and safe and reliable production is particularly important.

目录

CATALOGUE

1	公司简介	company introduction
3	专业严谨的研发团队	Professional team
4	百项荣誉业界翘楚	The honors of Yingroup
5	和鹰大师引领全球服务专家	Guide the global service expert
7	智能生产基地和加工中心	Intelligent production base and processing center
8	行业应用	Industry Application
9	自动裁剪机系列	Intelligent cutting machine series
18	自动铺布机系列	automatic spreader series
25	自动真皮裁剪机系列	Leather cutting machine
33	智能模板机系列	Intelligent template machine
36	智能吊挂系统	Intelligent hanger system
39	智能仓储系统	Intelligent storage system
40	长园和鹰融资租赁	Yingroup' financial leasing
41	三维扫描系统	Three-dimensional Scanning system
45	全面解决方案	Comprehensive solution
51	软件系统	Software system





公司简介

COMPANY

INTRODUCTION

全球时尚产业互联网+、智能制造、智慧物流无缝融合
全国解决方案的专业服务商



长园和鹰（长园：600525.SH）总部位于上海，在日本、德国、美国等国家设立了分支机构，作为全球时尚产业互联网+、智能制造、智慧物流无缝融合全面解决方案的专业服务商，在全球范围内整合了全球顶级技术。如欧泰科智能吊挂技术、德国轩尼博格的智能仓储技术、日本AGMS的CAD技术、香港意达的真皮裁剪技术、金勺模板机缝制技术等，打通缝前、缝中、缝后整个服装工艺生产线。

历经多年发展，长园和鹰产品覆盖了服装、鞋帽、箱包、汽车内饰、航空航天、家居、医疗等领域，实现了市场占有率全球领先，产品销售到全球数十个国家和地区，深受海内外客户的欢迎！

长园和鹰拥有数控裁剪机和智能吊挂的全面自主知识产权，拥有专利238项，主起草行业标准3项。企业秉承“和谐共生、合作共赢”的企业经营理念，以匠心精神不断开发创新，提高产品质量与性能，先后被评为国家火炬计划重点高新技术企业、上海工程技术研究中心，荣获上海名牌、上海市著名商标等上百项荣誉，并以江苏为中心建立了现代化的生产基地。

长园和鹰融汇“工业4.0”和“互联网+”理念，利用多年积累的行业大数据将互联网+、智能制造、智慧物流三者深度融合，并辅以和鹰自身快速灵活的金融支持计划，为客户提供更加先进的从设备到服务，从概念到产品，从深度定制到个性化推送的全面解决方案。

目前，长园和鹰已经分别针对男装、女装和休闲运动服与山东诸城、上海金山、安徽宿松等当地地服装企业合作，推出服装工业4.0智能工厂，从面辅料进厂、服装制作到成品分拣运输至客户或门店的全过程通过信息技术进行互联互通，将工厂管理的无人化、产品制造全过程的“不落地”变为现实。

目前，长园和鹰已经分别针对男装、女装和休闲运动服与山东诸城、上海金山、安徽宿松等当地服装企业合作，推出了服装工业4.0智能工厂，从面辅料进厂、服装制作到成品分拣运输至客户或门店的全过程通过信息技术进行互联互通，将工厂管理的无人化、产品制造全过程的“不落地”变为现实。

The headquarters of YIN GROUP is located in Shanghai, in Japan, Germany, the United States and other countries set up branches, as the global fashion industry Internet + seamless integration, intelligent manufacturing, intelligent logistics comprehensive solutions for professional services, within the scope of the global integration of the world's top technology, such as Euratex' s

smart hanger technology, the smart warehousing technology of German heinenberg, the leather cutting technology of ITA in Hong Kong, the sewing technology of Jinshao template machine and so on ,which put through the entire garment production line of before-stitching stitching and after stitching sections. After years of development, CYG Yin group products covered with clothing, shoes and hats, luggage, automotive interior, aerospace, household, medical and other fields, to achieve the world's leading market share, product sales to the world dozens of countries and regions, welcomed by customers at home and abroad.

YIN GROUP has the comprehensive independent intellectual property rights of CNC cutting machine and intelligent hanging, with 238 patents and 3 main drafting industry standards. Companies adhering harmonious coexistence and win-win cooperation.to develop and research instantly with ingenuity sprit, improve products quality and performance. has been rated as key national torch high-tech enterprise, Shanghai engineering technology research center, won the Shanghai famous brand, Shanghai famous trademark and other hundreds of glory, and established a modern production bases in jiangsu province as the center.

YIN GROUP integrate industrial 4.0and internet+ concept, utilize the years of industrial data accumulation , to deeply integrated the internet+ , intelligent manufacturing and intelligent logistic together . supplemented by the hawk its rapid flexible financial support plan, to provide customers with more advanced equipment to service, from concept to product, from the depth of customization to the comprehensive solution of personalized push.

At present, Yin group has been cooperated with many local company such as cities of Shandong Province ,Shanghai jinshan, anhui SuSong ,respectively for men's, women's and sportswear .where we created a 4.0 smart clothing industry factory, from the fabric come into the factory , clothing production to the finished product transportation to the client or store the whole process of sorting through information Internet communication technology, the factory management of unmanned, product manufacturing process of "not landed" into a reality.



专业严谨的研发团队

PROFESSIONAL AND RIGOROUS RESEARCH AND DEVELOPMENT TEAM

作为上海工程技术研究中心、中国产业用纺织品研发基地，长园和鹰致力于将全球先进的产品、技术和设计理念带给客户。长园和鹰在中国、日本和德国分别设立了研发中心，2016年12月，长园和鹰获评为上海市“优秀院士专家工作站”称号，通过这支“全面、专业、严谨”的高素质研发团队，整合国际领先技术，引进、消化、再吸收，针对不同行业、不同材料、不同规模定制产品，以不断创新的精神始终追求产品的卓越品质，为长园和鹰给客户“互联网+、智能制造、智能物流”无缝融合的全面解决方案，提供强有力的技术支撑。

As the Shanghai engineering technology research center, China industrial textile research and development base, Yingroup dedicated to bringing in the world's advanced products, technologies and design concepts to customers. Yingroup set up the research center in China, Japan and Germany. In December 2016, we got the title of outstanding experts workstation of Shanghai, through the professional team, integrate the international leading technology, the introduction, digestion, absorption, again according to different industry, different materials, different size to customize products, in the spirit of continuous innovation has always been the pursuit of excellent quality of products, providing customers with Internet +, intelligent manufacturing, intelligent seamless integration of comprehensive logistics solutions, provide strong technical support.

百项荣誉业界翘楚

THE HONORS OF YINGROUP

作为全国《数控裁剪机》、《自动铺布机》、《吊挂输送系统》等行业标准的主起草单位，长园和鹰已拥有专利238项，被评为国家火炬计划重点高新技术企业、上海工程技术研究中心、国内首批中国服装智能制造技术创新战略联盟成员单位，同时荣获上海市科技进步三等奖、中国轻工业联合会科技进步二等奖、上海著名商标、上海名牌等上百项荣誉。

As the national CNC cutting machine, automatic laying machine, hanging transport system and other industry standard main drafting unit, we have 238 patents, was named the national torch plan key high-tech enterprise, Shanghai engineering technology research center, the domestic first batch of Chinese clothing of intelligent manufacturing technology innovation strategy alliance member unit, at the same time won the Shanghai science and technology progress, China light industry federation of scientific and technological progress second prize, third prize of Shanghai famous trademark, hundreds of Shanghai famous brand and other honors.



- 2012年---承担国家火炬计划产业化示范项目
- 2012年---承担上海市火炬计划项目
- 2013年---国家重点新产品--HY-H707L型数控裁剪机
- 2012至今---荣获上海名牌称号
- 2014年---专精特新产品--数控裁剪机
- 2015年---上海市著名商标
- 2016年---被评为“闵行区最佳成长性企业”
- 2016年---荣获“十二五”全国轻工业科技创新先进集体
- 2016年---获评为上海纺织品智能裁剪装备工程技术研究中心

- 2012---To undertake the national torch plan industrialization demonstration project
- 2012---To undertake the Shanghai torch project plan
- 2013---Create HY-H707L (A new type of CNC cutting machine)
- 2012---Won the title of Shanghai famous brand
- 2014 -- special new product -- CNC leather-cutting machine
- 2015 -- Shanghai famous trademark.
- 2016---Won the best growth enterprise in minhang district
- 2016---Won the 12th five year national light industrial science and technology innovation advanced collective
- 2016---The intelligent cutting equipment engineering technology research center of Shanghai textile products.



“和鹰大师” 引领全球服务专家

YINGROUP THE LEADING GLOBAL SERVICE EXPERTS



让客户满意是长园和鹰的服务宗旨。长园和鹰与当地代理商共同建立了强大的售后服务体系，主要由服务管理科、配件配送科、技术支持科、国内外客户服务科4部分组成。首创互联网远程服务中心，训练有素的售后服务团队24小时全天候待命，4大服务标准（服务资质标准、服务设施标准、服务质量标准、服务信息标准）成为行业标杆，分区域定期开展IE管理、裁床、吊挂维修操作等培训，全方位解决客户的所有问题。

Let customer satisfied is Yingroup service aim .Yingroup set up a strong after-sales service system with local agent ,mainly by the service management department ,Parts distribution department,technical support department ,Domestic and international customer service department. Pioneering internet remote service center, well-trained after-sales service team for 24-hours 4 service standards become the Industry Benchmarking (Service qualification standard, Service facility standards,service quality standards,service information standards).The sub-region will carry out the training of IE management, cutting bed and hanging maintenance operation on a regular basis and solve all problems of customers in all directions.



24小时全天候待命
24-hour at service



远程智能化监控，快速解决客户问题 / Remote intelligent monitoring ,quickly resolve customer problems

长园和鹰“远程智能化监控维护服务平台”，利用互联网和大数据分析等技术实现产品的智能调度，通过远程服务快速解决产品售后问题。

Yingroup “remote intelligent monitoring maintenance service platform” using the intelligent and big data analysis to implement intelligent dispatch of products, to solve the products sales- after problem in that way.



定期回访客户，提供专业维护保养 / Regularly visit customers ,to provide professional maintenance Yingroup

长园和鹰售后工程师定期主动拜访用户，针对用户机器磨损程度进行专业保养。

Our after-sales engineers visit customers regularly ,Provide professional maintenance according to user machine wear degree.



CRM实时互动一对一咨询 / CRM real-time interactive one-on-one consulting

通过“和鹰科技服务”官方微信互动平台，长园和鹰对客户各类服务活动等问题咨询进行实时反馈。

Through our official WeChat interactive platform, Yingroup provide real-time feedback on various service activities.



400呼叫中心，24小时全天候及时响应 / 400 call center , 24-hour service

长园和鹰365天24小时全天在线的400呼叫中心服务，及时响应客户需求，为客户排忧解难。

Yingroup 365 days and 24 hours all day long online 400 call center service ,timely response to customer demand .



升级增值，无忧用设备 / Up-grade, value-added, ease to use equipment

长园和鹰为已经超出保修年限的客户免费提供配件更换和人员培训等升级增值服务。

Yingroup We provide free accessories replacement and personnel training for customers who have exceeded their warranty years.

随着市场不断扩大与升级，目前公司在江苏金湖、建湖和日本奈良建立三个5星级标杆生产基地，针对相应产品设有裁床事业部、智能吊挂事业部、真皮裁床事业部、智能模板缝纫机事业部等多个生产事业部，已形成优势互补、互为依托的规模化、智能化生产。厂区占地面积近20万平方米，智能流水线整齐划一，3D动画指导组装，PLM软件系统全程控制，所有产品均达免检标准。本着客户至上的理念，长园和鹰推行新型定制化生产模式，快速反应客户企业需求，结合客户企业实际，灵活缩短生产及研发周期，满足全球用户个性化定制和批量生产的需求。

长园和鹰在江苏金湖斥资2.5亿打造零部件加工中心，引进国际高精尖的加工设备，从源头上把控产品质量和成本，全面提升零部件的品质、缩短交期、降低价格，改善外协件交期长、精度差的问题，致力于为客户提供更加物美价廉的产品和服务。

先进的加工设备、精益化的管理、卓越的品质，使长园和鹰在全球市场上赢得了客户的认可和信赖。

Along with the market expanding and upgrading, at present, the company set up in jiangsu golden lake, nara JianHu and Japan three five-star standard production base, in view of the corresponding products with cutting bed division, intelligent hang division, leather cutting bed division, intelligent template sewing machine group, and other production division, has formed complement each other's advantages, mutual relying on the scale, intelligent production.

Region covers an area of nearly 200000 square meters, intelligent assembly line uniform, 3 d animation guide assembly, PLM software system to control all the way, all products exempted from inspection standards, in principle of customer supremacy, Yingoup implement new customized production scale and rapid response customer needs, combined with the actual customer enterprises, flexible shortening the period of production and research and development, meet the needs of global user customization and mass production

Yingroup has invested 250 million in jiangsu Jinhu building parts processing center, introducing the international advanced processing equipment, to control the product quality and cost from source, improve the quality of parts, shorten the delivery time, reduce prices, improve outsourcing delivery, problem of poor accuracy, dedicated to provide customers with more cheap and fine products and services.

Advanced processing equipment, lean management, excellent quality, make Yingroup win customers' recognition and trust in the global market.

互为依托的智能生产基地和加工中心
INTELLIGENT PRODUCTION BASE AND PROCESSING CENTER



服装 / CLOTHING

- 山东新郎希努尔集团
Shandong Sinoer Group
- 福建柒牌集团有限公司
Fujian Seven group Co.,Ltd
- 常州华丽达服装集团有限公司
Changzhou hualida clothing group co. LTD
- 美特斯邦威集团
Mesters Bonwe Group
- 森马集团有限公司
Semir
- 东莞茶山永联织造厂
Dongguan tea mountain yonglian manufacturing factory
- 际华三五零二职业装有限公司
International China sanwu2 professional decoration co. LTD

内衣 / UNDERWEAR

- 河北三针织衣有限公司
Hebei sanpin garment co. LTD
- 汕头市情相随内衣实业有限公司
Shantou city love forever underwear industry co. LTD
- 湖南朝日五内衣有限公司
Hunan chaoriwu underwear co. LTD
- 中山市蝶安芬内衣有限公司
zhongshan city die an fen underwear co.,Ltd.
- 安莉芳(山东)服装有限公司
Embry form
- 广东奥丽依内衣集团有限公司
OLENO GROUP
- 佛山川之内衣有限公司
Fushan Chuanzhishang co. LTD

箱包 鞋帽 / BHOES SHOES

- 东莞昌和箱包有限公司
Dongguan Changhe suitcase and bags products co. LTD
- 安徽齐心箱包有限公司
Anhui Qixin suitcase and bags products co. LTD
- 达利集团有限公司
Dali Group
- 张家港华夏帽业有限公司
Zhangjiagang Huaxia Headgear co. LTD
- 青岛前丰国际帽艺有限公司·际华集团
Qian feng Cap co.,Ltd
- 东莞时代皮具制品有限公司
Dongguan Times Leather Goods Manufacturer Co., Ltd.
- 东莞励泰皮具制造有限公司
Dongguan Litai Leather Goods Manufacturer Co., Ltd.

汽车内饰 / ADVANCED CUSTOMIZATION

- 东风渝安车辆有限公司 (东风小康)
Dongfeng yuan automobile co. LTD
- 江苏艾文德悦达汽车内饰有限责任公司
Jiangsu ewende yueda automobile interior decoration co. LTD
- 浙江俱进汽车内饰有限公司
Jujin Automobile & Motor-cycle
- 郑州宇通汽车有限公司
Zhengzhou yutong automobile co. LTD
- 柳州卡迪韦特汽车饰件有限公司
Liuzhou Cartier Automobile Accessories Co., Ltd.

婴童服饰 / BABY APPEAR

- 福建财茂集团有限公司
Fujian finance and trade group co. LTD
- 郎田服饰 (田果果)
LangTian Clothing, K-BOY co. LTD
- 湖州今童王制衣有限公司
K-BOY co. LTD
- 广东婴姿坊婴童用品实业有限公司
Guangdong Yingzifang baby products industrial co. LTD
- 东莞巴迪小虎服装有限公司
Dongguan Badi Tiger Clothing co. LTD
- 广州市杰兴制衣 (英式)
Guangzhou Jiaxing Clothing (British)

高级定制 / ADVANCED CUSTOMIZATION

- 大连大杨创世股份有限公司
Dalian DAYANG chuangchuang co. LTD
- 北京顺美服装股份有限公司
Beijing Smart Garments co. LTD
- 天津市世元制衣有限公司
Tianjin city Shiyuan clothing co.,Ltd.
- 佛山NO.1实业有限公司
Foshan No.1 industry co. LTD

家居 / HOUSEHOLD

- 全友家私有限公司
Quanyou house and home co. LTD
- 敏华家具有限公司 (芝华士)
Manwah Furniture co. LTD
- 浙江顾家工艺沙发制造有限公司
Zhejiang kukasofa co.,LTD
- 深圳左右家私有限公司
Shenzhen furniture co. LTD
- 佛山联邦高登家私有限公司
Foshan Federal Gordon Furniture Co., Ltd.
- 爱依瑞斯家居用品有限公司
Iris Household Products Co., Ltd.
- 林氏木业家居
Iris Household Articles Co., Ltd.

运动休闲 / ATHLEISURE

- 湖北动能体育用品有限公司(李宁)
Hubei kinetic energy sports products co. LTD
- 常州市穗满国际贸易有限公司
Changzhou city huiman international trade co. LTD
- 东莞市以纯集团有限公司
YISHION
- 河南新亚服装有限公司
Henan xinya clothing co. LTD

产业用 / OTHERS

- 陕西法士特汽车传动集团有限责任公司
Shanxi fast auto drive Refco Group Ltd
- 浙江奥康鞋业股份有限公司
AOKANG
- 湖北洛曼劳仕医疗用品有限公司
Hubei Rockman Medical Supplies Co., Ltd.



INDUSTRY APPLICATION / 行业应用

自动裁剪机HY-HC系列
CNC CUTTING MACHINE HY- HC SERIES

用于大批量裁剪的自动化设备
AUTOMATIC EQUIPMENT FOR MASS CUTTING



特点/Traits:

- 1、配备集尘装置，节约维护保养时间，提高设备及耗材使用寿命
- 2、再覆盖由链条传动改为同步带传动，传动噪音更小，寿命更长；
- 3、机头采用L型布置，主传动轴结构优化，使得设备运动更平稳；
- 4、新型高效节能泵设计，降低设备噪音；在同性能情况下，降低功率，节约能耗。

- 1、Equipped with dust collecting device, save maintenance time and improve the service life of equipment and consumables ;
- 2、The recovering is changed from the rotation of the chain to the synchronous belt, the noise is smaller and the life expectancy is longer ;
- 3、The machine head adopts L-type layout, and the main rotation axis is optimized to make the equipment movement more stable ;
- 4、The design of the new high efficiency and energy saving pump reduces the equipment noise and reduces the power and the energy consumption in the same performance ;

技术参数/Technical Parameters:

型号 / Type	HY-HC1705J	HY-HC1705JL	HY-HC2007J	HY-HC2007JL
宽 / W (mm)	2415	2415	2715	2715
高 / H (mm)	1445	1445	1445	1445
长 / L (mm)	5365	6865	5365	6865
有效裁剪区域 / Effective cut area (L×W)	1850×1600 (mm)	3150×1600 (mm)	1850×1900 (mm)	3150×1900 (mm)
电源 / Power	三相380V/50Hz/30Kw			
最大裁剪高度 (真空吸附后) / Maximum cutting height (After vacuum adsorption)	50mm		70mm	
气源 (干燥洁净的压缩空气) / Air Source (Dry lean compressed air)	0.5-0.6MPa 160L/min		0.5-0.6MPa 160L/min	
最大机械速度 / Maximum mechanical speed	60m/min		60m/min	
设备总重量 / Total Weight	2200KG	3000KG	2400KG	3200KG

*注: 设备可根据您的实际需求定制, 重量及外轮廓尺寸会有变动。

Mark: The equipment may be customized according to your actual needs, and the quantity and outline dimensions will be changed

外形尺寸和规格/ Dimensions and specifications:

型号 / Type	HY-HC2311	HY-HC2311L	HY-HC3205L	HY-HC4005L
宽 / W (mm)	3015	3015	4915	5215
高 / H (mm)	1445	1445	1360	6865
长 / L (mm)	5365	6865	6855	6855
有效裁剪区域 / Effective cut area (L×W)	1850×2200 (mm)	3150×2200 (mm)	3200×3200 (mm)	3200×4000 (mm)
电源 / Power	三相380V/50Hz/30Kw		三相380V/50Hz/30Kw	
最大裁剪高度 (真空吸附后) / Maximum cutting height (After vacuum adsorption)	110mm		50mm	
气源 (干燥洁净的压缩空气) / Air Source (Dry lean compressed air)	0.55-0.6MPa 160L/min		0.55-0.6MPa 160L/min	
最大机械速度 / Maximum mechanical speed	60m/min		60m/min	
设备总重量 / Total Weight	3400KG	4000KG	5000KG	6000KG

*注: 设备可根据您的实际需求定制, 重量及外轮廓尺寸会有变动。

Mark: The equipment may be customized according to your actual needs, and the quantity and outline dimensions will be changed

您可以选择 / Optional:

长度: 加长机型, 适应更长的排料图, 也表明单次裁剪, 可生产更多的裁片。

宽度: 从1700mm到4000mm, 可以根据企业的产品特点, 选择适合的宽度, 有助于排产。

高度: 真空吸附后, 从50mm到70mm, 甚至110mm, 可根据企业的面料类型, 选定高度。

冷却装置: 该装置主要运用在熔点低的面料中, 在裁剪时, 面料和裁刀发生摩擦生热, 可能导致面料的熔着黏连, 而冷却装置可以为裁刀提供零度以下冷风, 降低刀面温度。

刀智能装置: 适用于多层、高层牛仔面料的裁剪, 确保裁剪精度, 提升裁剪产量。其他装置: “M” 移动装置, “T” 打孔装置、吸附过窗, 自动补压, 对条对格。

Length: extended models, to adapt to the longer discharging figure, also shows that the single cutting, it can produce more of the work piece.

Width: From 1700mm to 4000mm, can according to the product characteristic of the enterprise, choose the appropriate width, can help the platoon production.

Height: After vacuum adsorption, from 50MM to 70mm, or even 110mm, the height can be selected according to the fabric of the enterprise.

cooling device: The device is mainly used in the fabrics of low melting point, when cut, fabric and cutting knife friction heat production, may lead to melt adhesion of fabric, and the cooling device can offer the cutting knife below freezing cold wind, reduce the blade surface temperature.

Intelligent blade device: suitable for the cutting of multi-layer and high-rise jeans fabric, ensure the cutting precision and increase the cutting output.

自动裁剪机HY-S系列
CNC CUTTING MACHINE HY- S SERIOUS

HY-S0909

西服裁剪专用,铺布、裁剪、拾料同步作业
Tailored cloth cutting, spread the cloth and picking up the material



特点 / Traits :

- 1、无切割死角,不会出现丝缕切不断的现象;
 - 2、采用上下往复式直刀裁剪,精度高、速度快;
 - 3、裁剪弧度刀速自动调整,满足高精度的裁剪要求;
 - 4、分段吸附和分段裁剪,实现裁剪、拾料、铺料同时作业。
1. Everywhere can be cut, there will be no thread cutting consistantly phenomenon;
 2. Using up and down reciprocating straight knife cutting, high precision, high speed;
 3. Cutting are knife speed automotive adjustment, can satisfy the demands of high precision cutting.
 4. Segmented adsorption and subsection cropping, realize cutting、picking up materials、spreading working at the same time.

外形尺寸和规格 / Dimensions and specifications :

型号 / Type	S0809	S0906	S0909	S0912	S1606	S1609	S1612
外形尺寸 / Dimensions	10320L*1520W *1160h (台面高)	7360L*1660W *1150h (台面高)	10300L*1660W *1150h (台面高)	13320L*1650W *1150h (台面高)	7350L*2310W *1150h (台面高)	10320L*2310W *1150h (台面高)	13290L*2310W *1150h (台面高)
有效裁剪面积(单位:mm)/ Effective cut area	9000L*800W	6000L*900W	9000L*900W	12000L*900W	6000L*1600W	9000L*1600W	12000L*1600W
面料裁剪方式 / Cropping pattern of fabric	直刀上下往复式	直刀上下往复式	直刀上下往复式	直刀上下往复式	直刀上下往复式	直刀上下往复式	直刀上下往复式
电源 / Power	三相AC380/ 50HZ/22KW	三相AC380/ 50HZ/22KW	三相AC380/ 50HZ/22KW	三相AC380/ 50HZ/22KW	三相AC380/ 50HZ/22KW	三相AC380/ 50HZ/22KW	三相AC380/ 50HZ/22KW
气压 / Air pressure	0.5-0.6MPa	0.5-0.6MPa	0.5-0.6MPa	0.5-0.6MPa	0.5-0.6MPa	0.5-0.6MPa	0.5-0.6MPa
气流量 / Gas flow	60L/min	60L/min	60L/min	60L/min	60L/min	60L/min	60L/min
最大机械速度 / Maximum mechanical speed	60m/min	60m/min	60m/min	60m/min	60m/min	60m/min	60m/min
最大裁剪高度(真空吸附后) / Maximum cutting height (After vacuum adsorption)	5mm	5mm	5mm	5mm	5mm	5mm	5mm

*注: 设备可根据您的实际需求定制, 重量及外轮廓尺寸会有变动。
Mark: The equipment may be customized according to your actual needs, and the quantity and outline dimensions will be changed

自动裁剪机HY-S系列
CNC CUTTING MACHINE HY- S SERIOUS

HY-S1624

服装打样专用
Garment proofing machine



特点 / Traits :

- 1、整体吸附, 确保裁剪精度;
 - 2、擅长裁剪各种手工难处理的材料;
 - 3、三个急停按钮, 提高操作的安全性;
 - 4、双轮对旋磨刀, 可调节磨刀的时间间隔。
1. The overall adsorption ensures the cutting precision;
 2. Good at handling all kinds of manual prossing materials;
 3. Three stop botton, and improve the safety of the operation;
 4. Two-wheel of rotating knife, can adjust the time interval of knife.

外形尺寸和规格 / Dimensions and specifications :

型号 / Type	S1624
外形尺寸 / Dimensions	3600L*2110W*1250h (台面高)
有效裁剪面积(单位:mm)/Effective cut area	2400L*1600W
面料裁剪方式 / Fabric cutting pattern	直刀上下往复式
电源 / Power	三相AC380/50HZ/22KW
气压 / Air pressure	0.5-0.6MPa
气流量 / Gas flow	60L/min
最大机械速度 / Maximum mechanical speed	60m/min
最大裁剪高度(真空吸附后) / Maximum cutting height (After vacuum adsorption)	5mm

*注: 设备可根据您的实际需求定制, 重量及外轮廓尺寸会有变动。
Mark: The equipment may be customized according to your actual needs, and the quantity and outline dimensions will be changed

定寸裁剪机
INCH CUTTING MACHINE

用于裁剪矩形面料的自动化设备
To Cut The Rectangular Fabric Automachine



特点 / Traits :

- 1、通过裁剪机主体与夹紧装置上的水平夹紧器，可单次对最大达35mm厚的材料进行铺布和裁剪；
 - 2、5个裁剪机头间的距离可以在宽度方向上实现简单的移动，并通过气缸驱动，将暂时不使用的裁剪机头提升起来，防止材料被误裁；
 - 3、可通过自动对边装置与独立放布装置，在宽度方向进行5个裁剪机头同时裁剪，并根据指定的长度进行定寸裁剪，最后在自动升降台板上进行自动叠层作业。最大叠层高度可达到40cm。
1. Through the cutting machine main body levels of clamping device and elamping device can be single to maximum of 35 mm thick material and tailoring shop cloth ;
2. The distance between 5 cutting head can implement a single move across the width;and driven by cylinder ,Lift the head of the clipping machine temporarily out of use and prevent the material from being miscut.
3. Through automatic edge device and put cloth device independence,in five cutting head and cutting width,and according to the specific length set tailoring.Finally,in the counter automatically for automatic laminated operations.The biggest lamination light is 40cm.

外形尺寸和规格 / Dimensions and specifications :

型号 / Type	AS-2000-LF
外形尺寸(LXMXH) / Dimensions (LXMXH)	3750X3200X1500(mm)
电源 / Power	三相AC380V/50-60Hz/1.5KW
最小裁剪宽度 / Minimum cutting width	25cm
最大裁剪尺寸(长*宽*高) / Maximum cutting size(LENGTH *WIDTH*HIGHT)	2000X1800X35(mm)(注:根据裁剪面料的宽度及长度可定制) Tailoring fabric can be customized
叠层最大高度 / Maximum height of the lamination	40cm
定寸机头数量 / The number of the machine head	5台(数量可定制) (Quantity customizable)
最大机械速度 / Maximum mechanical speed	20m/min

*注: 设备可根据您的实际需求定制, 重量及外轮廓尺寸会有变动。
Mark:The equipment may be customized according to your actual needs, and the quantity and outline dimensions will be changed

自动标签机HY-LB-II
INCH CUTTING MACHINE

用于裁片打标、贴标的自动化设备
TO CUT THE RECTANGULAR FABRIC AUTOMACHINE



特点 / Traits :

- 1、全伺服控制，定位精度高；
 - 2、具有记忆功能，故障排除后，可自动完成任务；
 - 3、与CAD、CAM系统同步定位，实现铺布、打标、裁剪一体化生产；
 - 4、与和鹰CAD、裁剪机对接，实现从CAD排料、铺布、标签粘贴、到裁剪衣片的自动化解决方案。
1. The whole serve control ,high positioning accuracy;
2. Has the memory function,after troubleshooting,can automatically complete the task;
3. With CAD and CAM synchronous positioning,integrates spread cloth ,tagging,cutting production;
4. Connect with CAD cutting machine,realize from CAD nesting ,spread the cloth label paste,to cut pieces of atomation solutions.

外形尺寸和规格 / Dimensions and specifications :

型号 / Type	HY-LB-II
电源 / Power	单相AC220V/50Hz/1KW
标签尺寸 / Label Size	40X29(mm),标签每行10字,共8行 / The labels have eight lines per line of 10 characters
标签材料 / Label matirial	普通标签纸(可色彩打印)
粘贴速度 / Speed of Paste	约3秒一张 / 3 seconds per piece
粘贴方式 / Paste way	电脑控制打印标签并进行粘贴 / The computer controls the print label and makes a sticky note
数据编辑 / Data editing	CAM数据与打印数据通用,通过MarkEdit软件进行数据编辑,更改打印内容,打印位置等 / CAD data and printing data can be used in common by Markedit soft,change the content and position of the printing
打印文字 / Printing the word	标准尺寸: 3mmX3mm(可根据用户需求更改文字尺寸) / Standard size :3mm x 3mm (The size can be changed according to the user's requirement)

*注: 设备可根据您的实际需求定制, 重量及外轮廓尺寸会有变动。
Mark:The equipment may be customized according to your actual needs, and the quantity and outline dimensions will be changed

自动裁剪机 AG-A1705JL

CNC CUTTING MACHINE AG-A1705JL



特点 / Traits :

日本技术：AGMS软件和裁床都是都是在日本研发的，有40年以上的历史，是有基础有信用的企业；裁床主要配件日本提供：裁床主要配件，都是日本一流厂家生产出来的；完美组合：AGMS（日本管理，日本服务）+AGMS中国（中国快速对应，流畅的服务体制）

Japanese technology:AGMS soft and cutting bed are developed in Japan ,beyond 40-year history, which is a business with a credit base.Japan to provide cutting bed mai accessories :cutting bed main accessories,is a leading Japanese manufacturer to produce.Perfect ambination:AGMS (Japanese management and service) +AGMS China (China is responding quickly to a smooth service system)

外形尺寸和规格 / Dimensions and specifications :

型号 / Type		AG-A1705JL
有效裁剪面积 (LxW) / Effective cut area (LXW)		3150X1600(mm)
最大裁剪高度 (真空吸附后) / Maximum cutting height		50mm
最大机械速度 / Maximum mechanical speed		60m/min
电源 / Power		80V/50Hz/30KW
压缩空气源 / Compressed air source	气压 / Air pressure	0.55MPa
	气流量 / Gas flew	160L/min
设备总重量 / Tatal weight of equipment		3000kg

*注: 设备可根据您的实际需求定制，重量及外轮廓尺寸会有变动。

Mark:The equipment may be customized according to your actual needs, and the quantity and outline dimensions will be changed

气浮式台板

GAS FLOATING BEDPLATE



特点 / Traits :

气浮式台板，可以确保面料在台面上滑动时不被破坏。真空式台板适用于大幅的排料图，并在裁剪过程中固定面料。

Gas floating bedplate ,can ensure that the fabric is not damaged when sliding there;vacuum type bedplate is suitable for large discharging figure,fixed in the process of cutting the fabric.

外形尺寸和规格 / Dimensions and specifications :

台板宽度A / Bedplate width	每节台板长度L / Length of each bedplate	台板高度 / Bedplate hight	台板厚度 / Bedplate thickness
185cm	120cm	78-85cm	30mm
205cm	120cm	78-85cm	30mm
225cm	120cm	78-85cm	30mm
245cm	120cm	78-85cm	30mm
265cm	120cm	78-85cm	30mm

*注: 设备可根据您的实际需求定制，重量及外轮廓尺寸会有变动。

Mark:The equipment may be customized according to your actual needs, and the quantity and outline dimensions will be changed

YIN CAD

适用于服装、汽车、航空、箱包、鞋帽、家具等行业的YIN CAD系统,提供一整套的打样设计、放码和检测、裁剪计划以及智能排料等技术问题的解决方案。

Applies to clothing ,automobile,aviation,,bags ,shoes and hats ,furniture and other industries of YIN CAD system ,and provide a complete set of proofing design ,grading and testing ,cutting plan and intelligent and discharging solution to technical problems .



特点 / Traits :

精准快捷的数码成像系统可自动捕捉各类型纸样的轮廓线;自动生成裁剪报告单,便于企业有效、便捷的管理;全智能排料系统,提供高效、节约的智能排料解决方案。

The precise and fast digital imaging system can automatically capture the contour lines of each type of paper ; Auto-generated clipping report ,it is convient for the company to management effectively ;Full intelligent discharge system , provide effective 、 economical Intelligent discharge solutions.

特色模块 / Characteristic module:

纸样设计、修版、放码

该模块能提供轮廓线,内部线,剪口,布纹线等多种设计工具。自动和互动式的放码功能可以轻松地调出使用过的放码数据,并应用于新产品中。

智能排料

排料软件通过计算,在规定的时间内高效排料,通常8米的排料图,排料时间仅需3-5分钟。动排料专家可以实现夜间自动排料工作。

MTM量身定制

MTM量身定制模块应用于两类主要的服装设计。对于需量身定制的公司来说,模块可以提供样版的自动重塑,合乎每一位客户的尺寸需求。对于大批量生产的服装制造商来说,模块根据订单提供的尺寸进行自动放码,即可为几个不同尺寸的样版、各种款式以及单个产品放码。

工艺单

YIN CAD可自动生成产品技术单、纸样技术单以及裁剪计划报告单。技术单的组合使产品的技术管理更为有效和便捷。

INTELLIGENT DISCHARGE :

Discharging by calculation software ,within the principle time ,efficient discharging ,usually discharging figure 8 meters.discharging time only 3to 5 min.Discharging export can realize automotic discharging work at night .

MTM Customize:

MTM customize module is applied to two main clothing design .For the company to customized , Modules can provide templates for automatic remodelling,the size of each customer demand .For mas production of clothing mabufacturers ,module according to the size of the order to provide for automotive garding .That is say ,it can gard for sveral diferent size sample ,different pattern and single product.

Cutting management plan

After the operator has set the number of sizes of each style according to each order, the cutting design program automatically assigns the size of the mug to produce a highly efficient cropping plan

Process sheet

Ying CAD can generate product technical sheet automatically, paper sample technology sheet and Crop planning report form.The combination of technology sheet makes the technical management of products more effective and convenient.

自动铺布机 SM-IA AUTOMATIC SPREADER MACHINE SM-IA

针织、梭织两用型铺布机
knitting and tatting dual-purpose machine



特点 / Traits :

- 1、全伺服智能控制,铺布精准,操作简单;
 - 2、采用摇篮和滚筒同步送布系统;
 - 3、自动磨刀系统,切布宽度可调节;
 - 4、自动对边装置,无布自动停机;
 - 5、消除铺布张力,实现无张力铺布;
 - 6、配有展布结构,保证送出面料的平整。
- 1、 The whole serve device ,spread cloth precision,simple operation;
2、 Automatic edge device ,no cloth automatically stop;
3、 Use the cradle and the drum synchronized feed system ;
4、 Eliminate the spread tension and achieve the untensioned cloth;
5、 Automatic sharpening system,cut cloth width can be adjusted;
6、 With a distribution structure ,ensure that sent out the fabric is flat and level.

外形尺寸和规格 / Dimensions and specifications :

型号 / Type	SM-IA 1.6M	SM-IA 1.8M	SM-IA 2.0M	SM-IA 2.2M	SM-IA 2.4M
铺布宽度 / Spreading cloth width	160cm	180cm	200cm	220cm	240cm
布料最大重量 / Cloth maximum weight	60kg	80kg	100kg	100kg	100kg
设备净重 / Machine net weight	360kg	380kg	400kg	420kg	440kg
设备净空A / Machine net height	1734mm	1934mm	2134mm	2334mm	2534mm
设备总宽B / Machine width	2310mm	2510mm	2710mm	2910mm	3110mm
总装配尺寸 / Assembly dimension	1300*2310*975 mm	1300*2510*975 mm	1300*2710*975 mm	1300*2910*975 mm	1300*3110*975 mm
最大铺布高度 / Maximum spreading width	20cm				
铺布最高速度 / Spreading maximum speed	90m/min				
电源 / Power	单相AC220V(1相线1零线1地线)				
最大功率 / Maximum power	2.7KW				
功能简介 / Function introduction	1.可铺卷布、匹布(需要配匹布挑布装置或者匹布挑布加强装置);2.擅长铺卷布梭织面料。				

*注:设备可根据您的实际需求定制,重量及外轮廓尺寸会有变动。

Mark:The equipment may be customized according to your actual needs, and the quantity and outline dimensions will be changed

自动铺布机 SM-IA 3.2
AUTOMATIC SETTING MACHINE SM-IA 3.2

用于宽幅梭织、无纺、家纺卷布的铺布作业
Used for spreading woven, non-woven and home textile fabrics



特点 / Traits :

- 1、全伺服控制系统，铺布更精确；
 - 2、自动对边系统，无布自动停机；
 - 3、自动磨刀功能，刀行距离可调；
 - 4、采用滚筒同步传送，实现无张力铺布；
 - 5、用于3.2门幅的面料铺布，尤其在家用纺织品、产业用纺织品领域有广泛的运用。
1. Full servo control system, much more accurate on spreading cloth
 2. Automatic alignment side system, automatic stop working if no cloth
 3. Automatic sharpening function, the distance between the cutter can be adjusted
 4. Roller drive to achieve tension-free spreading
 5. For 3.2 width cloth, especially widely used in in home and industry textiles.

外形尺寸和规格 / Dimensions and specifications :

型号 / Type	SM-IA 3.2M
布卷最大重量 / Cloth maximum weight	200kg
电源 / Power	单相AC220V/50Hz/2.7KW
最大铺布高度 / Spreading maximum height	18cm
最大铺布速度 / Spreading maximum speed	70m/min
铺布(宽度)范围 / Spreading (width) scope	280-320cm
外形尺寸(长×宽×高) / Overall dimension(length * width X*height)	1950×4100×900(mm)
设备总重量 / Assembly weight	500kg

*注: 设备可根据您的实际需求定制, 重量及外轮廓尺寸会有变动。
Mark:The equipment may be customized according to your actual needs, and the quantity and outline dimensions will be changed.

自动铺布机 SM-IIA
AUTOMATIC SETTING MACHINE SM-IIA

适用于弹力针织面料的无张力铺布
Used for knit and tension-free cloth



特点 / Traits :

- 1、全伺服控制系统，铺布更精确；
 - 2、自动对边系统，无布自动停机；
 - 3、采用滚筒传送实现无张力铺布；
 - 4、自动磨刀功能，刀行距离可调；
 - 5、编码器定位，保证铺布长度的精确；
 - 6、自动磨刀系统，切布宽度可调节；
 - 7、配有展布结构，保证送出面料的平整。
1. Full servo control system, much more accurate on spreading cloth;
 2. Automatic alignment side system, automatic stop working if no cloth;
 3. Roller drive to achieve tension-free spreading;
 4. Automatic sharpening function, the distance between the cutter can be adjusted;
 5. Encoder positioning, ensure the accurate length on spreading cloth;
 6. Automatic sharpening system, the width of the cloth can be adjusted;
 7. Equipped with spreading cloth structure, ensure the output cloth flat;

外形尺寸和规格 / Dimensions and specifications :

型号 / Type	SM-IIA 1.6M	SM-IIA 1.8M	SM-IIA 2.0M	SM-IIA 2.2M	SM-IIA 2.4M
铺布宽度 / Spreading cloth width	160cm	180cm	200cm	220cm	240cm
布料最大重量 / Cloth maximum weight	60kg	80kg	100kg	100kg	100kg
设备净重 / Machine net weight	340kg	360kg	380kg	400kg	420kg
设备净高 / Machine net height	1734mm	1934mm	2134mm	2334mm	2534mm
设备总宽B / Machine width	2310mm	2510mm	2710mm	2910mm	3110mm
总装配尺寸 / Assembly dimension	1440*2310*1030 mm	1440*2510*1030 mm	1440*2710*1030 mm	1440*2910*1030 mm	1440*3110*1030 mm
铺布高度 / Spreading height	20cm				
铺布最高速度 / Spreading maximum speed	90m/min				
电源 / Power	单相AC220V(1相线1零线1地线)				
最大功率 / Maximum power	2.0kw				
功能简介 / Function introduction	1.可铺针织和梭织匹布面料; 2.尤其擅长铺针织布, 可实现无张力铺布。				

*注: 设备可根据您的实际需求定制, 重量及外轮廓尺寸会有变动。
Mark:The equipment may be customized according to your actual needs, and the quantity and outline dimensions will be changed

自动铺布机 SM-IX 2.0

UTOMATIC SETTING MACHINE SM-IX 2.0



特点 / Traits:

- 1、匹布和卷布实现在一台机器上铺布；
 - 2、卷布铺布可以实现正反卷铺布；
 - 3、采用展布皮带进行展布；
 - 4、单向切断铺布，双铺，可选配单铺压布和双铺压布机构。
 - 5、采用滚筒传送实现无张力铺布；
1. The grey cloth and the rolled cloth are laid out on one machine ;
 2. Cloth can achieve positive and negative rolling cloth;
 3. With distribution belt distribution;
 4. cut cloth in single-way or double way, two structure for option;
 5. Use roller conveyor to achieve tension-free spread

外形尺寸和规格 / Dimensions and specifications :

型号 / Type	SM-IX 2.0M
布卷最大重量 / Cloth maximum weight	60kg
电源 / Power	单相AC220V/50Hz/2.7KW
最大铺布高度 / Spreading maximum height	18cm
最大铺布速度 / Spreading maximum speed	90m/min
铺布宽度 / Spreading Width	200cm
外形尺寸(长×宽×高) / Overall dimension(length * width X*height)	1900×2710×1200(mm)
设备总重量 / Assembly weight	350kg

*注: 设备可根据您的实际需求定制, 重量及外轮廓尺寸会有变动。
Mark: The equipment may be customized according to your actual needs, and the quantity and outline dimensions will be changed

自动铺布机 SM-VI

UTOMATIC SETTING MACHINE SM-IV



用于含毛梭织面料的铺布
Used for fabric with wool woven fabric



铺布效果模拟



三维效果图

特点 / Traits:

- 1、实现卷布面料进行自动对称镜像铺布；
 - 2、采用伺服电机同步跟随铺布，实现无张力铺布；
 - 3、面料预松功能，送布速度及时响应行走速度；
 - 4、无需人工按压布料,具有自动穿布功能；
 - 5、可实现正反卷面料铺布。
1. The fabric is automatically symmetrical spreading.
 2. The servo motor synchronous follow to achieve the untensioned cloth;
 3. The fabric prerelease function, the speed of the delivery response to the walking speed timely.
 4. Without artificial press cloth ,with functions of automatic wear cloth ;
 5. It can realize spreading cloth in both positive and negative direction.

外形尺寸和规格 / Dimensions and specifications :

型号 / Type	SM-VI 1.6M
布卷最大重量 / Cloth maximum weight	60kg
电源 / Power	单相AC220V/50Hz/2.7KW
最大铺布高度 / Spreading maximum height	18cm
卷布最大直径 / The maximum diameter of the cloth	450mm
最大铺布速度 / Spreading maximum speed	90m/min
铺布宽度 / Spread width of cloth	160cm
铺布方式 / The way of Spread cloth	单向铺布/双向往返铺布/镜面对称铺布 / Single spreading ,two-way spreading,rotating spreading
设备总重量 / Assembly weight	500kg

*注: 设备可根据您的实际需求定制, 重量及外轮廓尺寸会有变动。
Mark: The equipment may be customized according to your actual needs, and the quantity and outline dimensions will be changed.

自动铺布机 SM-V

Automatic spreading machine SM-V

用于弹性较大的面料铺布
used for more flexible fabric



特点 / Traits :

- 1、使用传送带送布系统，面料松紧自动调节，有效的消除面料张力；
 - 2、采用台板与传动系统一体式整体结构；
 - 3、铺布高度自动跟踪系统，自动调节台板升降；
 - 4、感应式控制始点、终点的布料长度，保证铺布长度的精确性；
 - 5、采用光电传感器和气缸，实现铺布的自动纠偏功能；
 - 6、适用于各种轻薄面料。
1. Use conveyor belt feeding system, automatically adjust fabric elastic, effectively eliminate fabric tension.
 2. Adopt the integrated structure of the board and the transmission system.
 3. Adopt automatic tracking system for spread height, automatically adjust the table lift.
 4. Inductively control the length of starting and the end, to ensure the accuracy of the length of spreading.
 5. Use photoelectric sensors and cylinders, to achieve automatic correction of the spread function.
 6. Suitable for all kinds of light fabrics.

外形尺寸和规格 / Dimensions and specifications :

型号 / Type	SM-V(W1.6m L5.0m)
输入电源 / power	三相AC220V/4.5KW/50-60Hz
布卷最大重量 / The maximum weight of cloth roll	100kg
布卷最大直径 / The maximum diameter of cloth roll	Φ350mm
最大铺布高度 / The maximum spreading height	100mm
设备重量 / weight	1300Kg
设备外形尺寸 / Outline size	5910x2210x1520mm

*注: 设备可根据您的实际需求定制, 重量及外形尺寸会有变动。
Mark: The equipment may be customized according to your actual needs, and the quantity and outline dimensions will be changed

单向专用多层铺布机

UNIDIRECTIONAL DEDICATED MULTI-LAYER SPREADER

用于无纺布类面料的铺布
used for more flexible fabric



特点 / Traits :

- 1、一台铺布机可实现多卷面料同时铺布，工作效率提高数倍；
- 2、铺布和压布装置采用水平夹紧技术，即使是多卷面料也可以准确铺布；
- 3、对比较窄的面料，可实现两列同时铺布；
- 4、该设备配备优良的切刀装置，可处理多种面料的裁剪、铺布和叠层作业；
- 5、铺布机在自动行走时，压布装置可手动调整到任意位置；
- 6、配备了气浮式空气台板，面料铺好后可以轻松运走；
- 7、与对边装置（可选配）联动时，铺布可实现更加精确对边。

1. One machine can spread multi-roll fabric at the same time, the working efficiency is improved several times.
2. Spreading and pressing device with horizontal clamping technology, even multi-roll fabric can be accurately spread.
3. For a narrower fabric. It can spread two columns at the same time.
4. The machine is equipped with an excellent knife to handle the cutting, spreading and stacking of various fabrics.
5. While operating, cloth pressing device can be manually adjusted to any location.
6. Equipped with air-floating air board, the fabric can be easily transported after paving.
7. When linking with the edge alignment device (optional), the cloth can align edge more accurate.

外形尺寸和规格 / Dimensions and specifications :

型号 / Type	单向专用多层铺布机 / SM-V(W15.m L5.0m)
电源 / power	单相AC220V/50-60Hz/5.5KW
铺布最大宽度 / The maximum width of spreading	240cm
铺布最大高度 / The maximum spreading height	15mm
同时可铺布层数 / Layer number	可实现最多6层面料厚度不超过35mm铺布 / Maximum 6 layers of fabric with a thickness of 35mm or less
最大铺布速度 / The maximum speed	36m/min

*注: 设备可根据您的实际需求定制, 重量及外形尺寸会有变动。
Mark: The equipment may be customized according to your actual needs, and the quantity and outline dimensions will be changed

双刀头双传送带式数控振动刀皮革切割机

AUTOMATIC LEATHER CUTTING MACHINE WITH TWO WORKING HEADS AND TWO-WAY CONVEYOR BELTS

IC850DHC



产品介绍 / Introduction :

IC850DHC配置双切割头，双切割区域及双传送带，两条传送带独立传送互不影响，可同时进行两张65-80尺皮料的排版及切割。与一台LR308云计算智能读皮及排版机配套使用，8小时产量相当于12名熟手裁剪人员工作量之和，且多节省2-5%的皮料。适用于真皮沙发，汽车座椅，大班椅等行业。

IC850DHC is equipped with two working heads, two working areas, two conveyor belts, the conveyor belts can be operated independently. We can put two pieces of leather of 65-80 square feet on the working table at one time. Working with one ITTA leather nesting machine IN400, the production of 8 hours would compare with 12 skilled person, and the utilization rate of material is 2-5% higher than manual cutting IC850DHC have been widely used in automotive seats and accessories soft furniture (sofa, bed, massage chairs and office chairs)

技术参数 / Technical Parameters :

型号 / Type	IC850DHC
机器尺寸 / Machine dimension	8300L*3550W*3600h
双区域切割范围 / Double working areas	3000L*2900W*2
功率 / Power	3-phase 200-400VAC,50-60HZ,15KW Monopase 200-400VAC,50-60HZ,2KW
气压 / Air consumption	0.4-0.6MPa
最大机械速度 / Maximum cutting speed	84m/min
配附刀具振动频率 / Vibration frequency of the knives	15000-18000times/min
选配 / Optional	In400排版机

*注: 设备可根据您的实际需求定制, 重量及外轮廓尺寸会有变动。

Mark: The equipment may be customized according to your actual needs, and the quantity and outline dimensions will be changed

LR30B ITTA云计算智能验皮扫描排版机

LR30B ITTA Intelligent leather reading and nesting machine

汽车, 家具, 航空
Cars, furniture, aviation



产品介绍 / Introduction :

1. 先进的验皮、读皮及信息存储运算功能可以对皮革实现全数字化处理, 包括皮革形状、瑕疵点、等级划分、批次、仓储信息等, 所有数据均保存在数据库中, 可随时调取, 建立真正的数字化皮料仓库;
2. 智能真皮排版功能, 相对于, 人工排版大大提高排版精度、皮料利用率和工作效率;
3. 可扩充容量: 采用分布式排料算法, 用多台甚至几十台工作站组成网络同时运算, 进一步提高排版利用率及效率;
4. 自动化运算: 所有数据可基于后台自动运算, 无须人工干预;
5. 数据库管理: 可同时支持数十台读皮机及数十台自动裁剪机的操作, 满足大规模生产需求;
6. 多格式输出: 输出到裁剪机的数据, 支持不同的数据格式, 可以接驳不同型号、不同厂家的真皮自动裁剪机。

1. Yin leather reading machine lr30b has the advanced features of recording the leather information.(such as shape, size, storage and so on.) all of the leather information is stored in cloud which could be conveniently used.
2. compared with manual layout, the Intelligent leather layout function hugely improve layout accuracy, leather use ratio and working efficiency.
3. Extend capacity: adopt distributing layout method, operate by network through several or even if dozens of working stations to make further improve layout use ratio and efficiency.
4. Automated operation all the data could operated automatically in background.
5. Database management: could support for dozens of leather reading machine and auto cutting machine operation automatically. Meet the large scale request.
6. Multi-format output: the data exported to cutting machine, supply different data format, available to connect with various models and leather cutting machines

技术参数 / Technical Parameters :

型号 / Type	LR30B
外形尺寸 / Overall size	3500L*2600W*2100h
排版软件 / Layout software	ITTA智能真皮排版软件 / itta intelligent leather layout software
效率 / Efficiency	每小时15至20张 / 15-20 layers per time
配置 / Configuration	云计算服务器 高清相机及广角 高清投影机 高清红外线感应器 高清工业镜头 电脑主机及显示屏 / cloud computing server, high definition camera High definition projector, high definition infrared Sensor, high definition industrial lens, computer main, Machine and display
功率 / Power	220V 1.5KW

*注: 设备可根据您的实际需求定制, 重量及外轮廓尺寸会有变动。

Mark: The equipment may be customized according to your actual needs, and the quantity and outline dimensions will be changed

双刀头双区域数控振动刀皮革切割机

AUTOMATIC LEATHER CUTTING MACHINE WITH TWO WORKING HEADS AND DOUBLE CUTTING AREAS

IC400DH/IC455DH/IC650DH



产品介绍 / Introduction :

IC400DH/IC455DH/IC650DH 系列数控配置双切割头，配合双切割台面，工作效率可比单头、单切割区高出35%，广泛适用于制鞋、箱包、手袋等行业。

IC400DH/IC455DH/IC650DH series is equipped with double cutter and double cutting area, the work efficiency is 35% higher than one cutter. This series is widely applied to shoes-producing, bags and other industries.

技术参数 / Technical Parameters :

型号 / Type	IC400DH/IC455DH/IC650DH
机器尺寸 / Overall size	4000L*1840W*2700h/4500L*2300W*2700h/6500L*2300W*3100h
排版区域 / Typesetting area	1500*1200mm*2/1650*1500mm*2/2800*1500mm*2
功率 / Power	11.5KW/11.5KW/15KW
气压 / Pressure	0.4-0.6Mpa
最大切割速度 / Maximum cutting speed	84米/分钟

*注: 设备可根据您的实际需求定制, 重量及外轮廓尺寸会有变动。

Mark: The equipment may be customized according to your actual needs, and the quantity and outline dimensions will be changed

电脑皮革排版机

Computer Leather Typesetting Machine

鞋业, 箱包, 皮衣
Shoes, bags, leather Clothing



产品介绍 / Introduction :

电脑皮革排版机由高清识别系统、高清皮革投影系统、智能皮革排版系统三部分组成，是数字化皮革切割机的配套设备，其中高清皮革识别系统能快速准确的识别各类皮革物料，同时智能排版系统又能大大提高排版效率和皮革利用率，整机具有操作简单，工作效率高的特点，配合自动化切割机能极大的提高生产效率。

leather typesetting machine, composed by the HD identification system, HD leather projection system, intelligent leather typesetting system, is equipped device for digital leather cutting machine. The HD identification system can identify all kinds of leather materials quickly and accurately; intelligent leather typesetting system can improve typesetting efficiency and leather utilization. It has the feature of easy operation and high efficiency, and can largely improve the efficiency with automatic leather cutting machine.

技术参数 / Technical Parameters :

型号 / Type	IN200/IN280/IN300(真空吸附)
机器尺寸 / Overall size	1600L*1350W*2660h/2800L*1650W*2900h/2800L*1650W*2900h
排版区域 / Typesetting area	1500*1200mm/2700*1500mm/2700*1500mm
功率 / Power	2-phase 220V 0.5KW
配置切割机类型 / Types of Equipped cutter machines	IC200/IC300/IC400 IC500/IC600/IV650 IC600/IC650
标准配置 / Standard configuration	操作台、电脑主机、显示屏、高清投影仪、条码打标机、多功能排版软件 / Console Computer host Display HD projector Bar code marking machine Multifunctional layout software
可选高级配置 / Optional advanced configuration	佳能相机、高倍镜头、ITTA全自动排版软件(可自动识别皮革信息及瑕疵) / Canon camera High magnification lens ITTA automatic layout software

*注: 设备可根据您的实际需求定制, 重量及外轮廓尺寸会有变动。

Mark: The equipment may be customized according to your actual needs, and the quantity and outline dimensions will be changed

鞋业箱包打样方案

SHOE AND BAGS PROOFING PROGRAM

IC150/120 数控振动刀皮革切割机
IC150/120 CNC vibration knife leather cutting machine



鞋业, 箱包
Shoes, bags

产品介绍 / Introduction :

此系列为小型多功能数字化皮革切割机, 广泛应用于各类鞋厂、箱包厂的版房设计打样用, 能快速的将设计方案转换成标准样品, 适用各类皮料、革料的切割, 缩短企业新品开发周期, 减少人工提高效率, 产品配有高清投影系统, 切割过程直观可视, 刀具有振动、气动两种方式可选。

This series is a small multi-function digital leather cutting machine, widely used in various shoe factories, luggage factory board room design proofing. It can quickly convert the design into a standard sample, and is suitable for all kinds of leather, leather cutting, which will shorten the development cycle of new products, reduce labor and improve efficiency. With HD projection system, the cutting process can be intuitive observed. There are two ways to select- vibration and pneumatic.

技术参数 / Technical Parameters :

型号 / Type	IC150/IC120
机器尺寸 / Overall size	2200L*1600W*2700h/1900L*1200W*2700h
切割区域 / Cutting area	1500L*1000W/1200L*800W
最快机械速度 / Maximum cutting speed	84m/min
功率 / power	3-phase 200-400VAC,50-60HZ,5.5KW
配附刀具振动频率 / Vibration frequency of equipped knives	15000-18000times/min
气压 / Pressure	0.4-0.6Mpa

*注: 设备可根据您的实际需求定制, 重量及外轮廓尺寸会有变动。

Mark:The equipment may be customized according to your actual needs, and the quantity and outline dimensions will be changed

自动真皮裁剪机LC系列

MULTI-FUNCTION AUTO-CUTTING SERIES

LC3218/LC2518



特点 / Traits :

- 1、适配多种裁刀系统 (震动刀、气动刀、圆刀可选);
- 2、适配两种吸附系统 (整体吸附、分区吸附可选);
- 3、节能环保真空系统;
- 4、YIN智能排版软件系统;
- 5、适用于各类皮革面料、纺织面料;
- 6、适用于鞋包企业仿皮/辅料裁切生产;
- 7、适用于服装企业小批量、多批次的定制生产。

1. Adapt to a variety of cutter system (vibration knife, pneumatic knife, round knife for selection)
2. Adapt to two adsorption systems (overall adsorption, partition adsorption for selection)
3. Energy-saving vacuum system
4. YIN Intelligent layout software system
5. Suitable for all kinds of leather fabrics, textile fabrics
6. Suitable for leather / accessories-cutting production of shoes and bags enterprises
7. Suitable for customized production of small quantities, more batches

技术参数 / Technical Parameters :

型号 / Type	LC3218	LC2518
外形尺寸 / Overall size(L*W*H)	4300×2500×1100 (mm)	3600×2500×1100 (mm)
有效裁剪面积 / Effective cutting area	3200×1800 (mm)	2500×1800 (mm)
功率 / power	3-phase 380VAC	
气压 / Pressure	0.4-0.6Mpa	
最大机械速度 / Maximum cutting speed	60m/min	

*注: 设备可根据您的实际需求定制, 重量及外轮廓尺寸会有变动。

Mark:The equipment may be customized according to your actual needs, and the quantity and outline dimensions will be changed

通道式多层裁剪方案

CHANNEL MULTILAYER CUTTING PROGRAM

IC1670DHC 双刀头数控振动刀皮革切割机

Automatic leather cutting machine with two working heads IC1670DHC



鞋业, 箱包
Shoes, bags

产品介绍 / Introduction :

IC1670DH/IC2010DH配置双切割头, 循环式传送带, 支持超级排版(包括分方向排版及固定角度排版), 具有智能分页, 全自动智能传送, 自动定位, 辅助纠偏等功能, 并接受PLT\CU\DXF等多种格式文件。

该款机型适合真皮及多层卷性材料的智能切割。

IC1670/IC2012 is equipped with two working heads and a endless conveyor belt. It offers automatic nesting technique, intelligent feeding system, intelligent position system, auto transfer, accepts document of DXF\PLT\CUT format.

It is very suitable for cutting the material of leather, artificial leather, textiles and fabrics.

技术参数 / Technical Parameters :

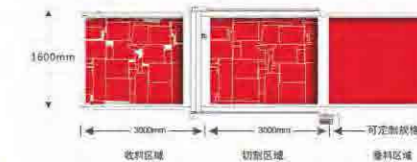
型号 / Type	IC1670DHC
外形尺寸 / Overall size(L*W*H)	3085L*2400W*1650h
双区域切割范围 / Cutting range of double area	1600L*700W
最快机械速度 / Maximum cutting speed	84m/min
功率 / Power	3-phase 200-400VAC, 50-60HZ, 12.5KW
配附刀具振动频率 / Vibration frequency of equipped knives	1500-1800times/min
气压 / Pressure	0.4-0.6Mpa

*注: 设备可根据您的实际需求定制, 重量及外轮廓尺寸会有变动。

Mark: The equipment may be customized according to your actual needs, and the quantity and outline dimensions will be changed

传送带式数控多层PU/布料切割机 IC450C/IC350C

CONVEYOR BELT CNC MULTI-LAYER PU / CLOTH CUTTING MACHINE



产品介绍 / Introduction :

ITTA意达科技最新研发的传送带式多层PU及布料切割机可精准完成多层切割作业, 专用于打样及少量生产的自动裁剪, 还可切割PVC, EVA, 港宝, 真皮大衣及中底板等多种材质, 适用于沙发, 服装, 汽车内部装饰, 箱包, 皮革, 鞋帽行业。

ITTA's newly designed multi-layer PU and fabric cutting machine with conveyor belt can accurately complete multi-layer cutting operations, specializing in automatic cutting for proofing and small amount of production. It can also cut PVC, EVA, Hong Bao, leather coats and midsoles and variety of materials, suitable for sofas, clothing, automotive interior decoration, luggage, leather, shoes and hats industry.

特点 / Traits :

- 1、整体吸附, 确保材料被固定;
 - 2、振动刀式切割, 精度高, 速度快;
 - 3、传送带式输送, 操作便捷;
 - 4、气动及电动刀头可简单更换, 更能切割真皮大底, 中底板, 港宝等硬性材质;
 - 5、红外线保护系统: 在机头进行裁剪作业时, 如果操作人员碰到机头两侧的安全杆, 机头会停止作业, 确保人员安全。
1. The overall adsorption, to ensure that the material is fixed.
 2. Vibration knife cutting, high precision, fast.
 3. Conveyor belt, easy to operate.
 4. Pneumatic and electric blade can be simply replaced, it is able to cut leather outsole, midsole, counter and other hard materials.
 5. Infrared protection system: If the operator touches the safety bars on both sides of the head during the cutting head is operating, it will stop working to ensure the safety of personnel.

技术参数 / Technical Parameters :

型号 / Type	IC450C/IC350C
机器尺寸 / Overall size(L*W*H)	6500L*2250W*820h/4780L*2250W*820h
切割区域 / Cutting area	3000L*1600W/2000L*1600W
功率 / Power	3-phase 200-400VAC, 50-60HZ, 20KW/12.5KW
真空吸力 / Vacuum suction	0.4-0.6Mpa
最大机械速度 / Maximum cutting speed	72m/min

*注: 设备可根据您的实际需求定制, 重量及外轮廓尺寸会有变动。

Mark: The equipment may be customized according to your actual needs, and the quantity and outline dimensions will be changed

智能模板缝纫机 SH8013

Intelligent template sewing machine SH8013

适用于：轻薄羽绒服、棉服、工装、针织、开口袋、上拉链等工艺

Application: Lightweight down jacket, Cotton clothes, tooling, knitting, open bags, zipper and other technology



特点 / Introduction :

- 1、进口配件；
Imported accessories
- 2、意大利进口同步带；
Italy imported timing belt
- 3、全伺服驱动系统；
Full servo drive system

- 4、适用于大部分轻薄料产品，可选配激光切割功能，缝制和修边同时进行，极大的提高生产效率和产品品质。
Suitable for most thin material products, laser cutting function for selection, sewing and trimming at the same time, greatly improving production efficiency and product quality.

技术参数 / Technical parameter :



型号 Model	缝纫面积 Sewing area	针距 Needle distance	缝纫速度 Sewing speed	电源电压 Voltage	重量 Weight	尺寸 Size	缝针 Needle	气压 Pressure
SH 8013	720*1300mm	0.5mm-10mm	2000-3200rpm	AC 220V 50HZ	500kg	2100*2200*1400 mm	DBx1	0.5MPA

智能模板机与传统长臂机对比：

Comparison between Intelligent template sewing machine and traditional long arm :

生产效率某些工序可达高级技术工5倍
The efficiency of some procedures can be 5 times higher than senior technician



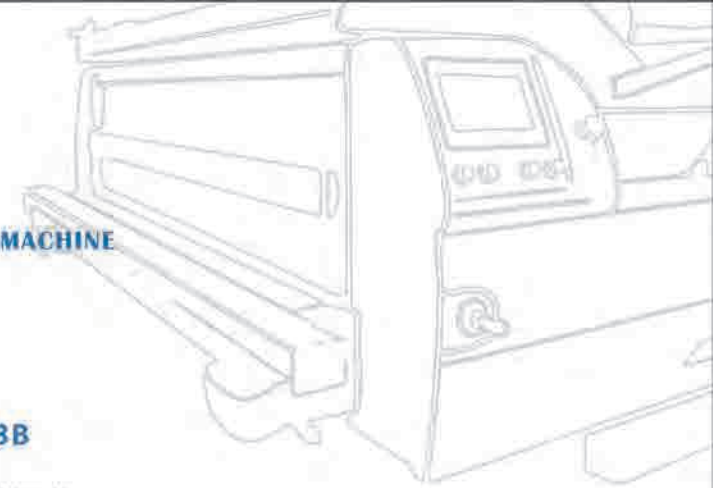
优势 / Advantage :

- 1、长臂机需要人工推模，一天工作8小时，工人很辛苦。智能模板机，无需人工推模，可以工作10小时。
 - 2、人工推模线迹不均匀，做复杂花样有难度，易出现次品，废品。智能模板机线迹均匀，美观，可做任意复杂图案。
1. Traditional long arm machine need to push model manually, it was tired for workers to work 8 hours a day; while intelligent template sewing machine can operate 10 hours without manual pushing model.
2. It is difficult to make complicated pattern and easy to create defective products and waste, and can't make unevenly lines with manual model; while intelligent template sewing machine have a beautiful and evenly lines, able to any complicated patterns.

传送带式数控多层PU/布料切割机

CONVEYOR BELT CNC MULTI-LAYER PU / CLOTH CUTTING MACHINE

IC450C/IC350C



智能模板缝纫机 SH9013B

Intelligent template sewing machine SH9013B

汽车座椅、箱包、皮革沙发、医疗用品、户外用品等缝制工艺
Sewing process for car seats, bags, leather sofas, medical supplies, outdoor products, etc.



特点 / Traits :

- 1、进口配件；
- 2、电磁铁剪线结构；
- 3、微油化机头；
- 4、X方向有效行程1300mm；
- 5、适用于中厚料的缝制，两倍旋梭减少换线频率，提高生产效率和产品品质；

1. Imported accessories
2. Electromagnet cut line structure
3. Micro-oil machine head
4. X - direction effective stroke 1300mm
5. Suitable for thick material, twicely reduce the frequency change line, improve production efficiency and production quality.

技术参数 / Technical parameter :



型号 Model	缝纫面积 Sewing area	针距 Needle distance	缝纫速度 Sewing speed	电源电压 Voltage	重量 Weight	尺寸 Size	缝针 Needle	气压 pressure
SH 9013 大旋梭	740*1300mm	0.5mm-10mm	2000-3000rpm	AC 220V 50HZ	520kg	2200*2200*1400 mm	Dbx17	0.5MPA

模板应用 / Application :



底紧面松袋盖
Low-tightness
loose bag cover



挡风片绗线
Wind piece
quilted line



裤子双唇开袋
Pants lips
open bags



西装合后中模板
Suit template



后片模板
Posterior template

智能模板缝纫机 SH10615 Intelligent sewing machine

适用于: 羽绒服、棉服、工装、针织、开口袋、上拉链等工艺
Application: Lightweight down jacket, Cotton clothes, tooling, knitting, open bags, zipper and other technology.



特点 / Feature :

Sh10615是针对目前模板机市场普遍存在缝纫面积不足、线迹不完善而开发的款中薄料机, 适用于超大羽绒缝、棉服、小型家纺等各种平缝工艺。

SH10615 is a machine for medium and thin fabric, specially designed for solving the widely existed problems of insufficient sewing area and uneven lines in market. It is suitable for Large down jacket quilted, cotton clothing, small home textiles and other flat seam process.

主要优点 / Prominent advantages :

- 1、缝纫面积大, 实缝面积大, 实缝达到900*1500mm;
- 2、防钻绒效果好, 满足市场工艺需求;
- 3、缝速高, 可达2800~3000转/min, 有效保证客户产能; 200~3000转/min
- 4、线迹美观, 正逆缝快速转换线迹能保证均匀一致, 大大提高缝片质量。
- 5、可选配激光切割功能, 适用于开袋、修边等。

- 1.Larger sewing area, from 900-1500mm
- 2.Have a good function of anti-drilling velvet, meet the market demand.
- 3.High speed of sewing, 2800-3000 turn/min, effectively ensure the productivity
- 4.Beautiful stitch, reverse stitch can be quickly converted and ensure uniform, greatly improving the quality of the seams.
- 5.laser cutting function for selection, suitable for open bags, trimming and so on

技术参数 / Technical parameter :

型号 Type	缝纫面积 Sewing area	针距 Needle distance	缝纫速度 Sewing speed	电源电压 Voltage	重量 Weight	尺寸 Size	缝针 Needle	气压 Pressure
SH 1065	900*1500mm	0.5mm-10mm	2000-3200rpm	AC 220V 50HZ	550kg	2300*2200*1420 mm	DB×1	0.5MPA

智能吊挂系统 Intelligent Hanging system

E3000 标准型吊挂系统
E3000 Type Standard hanging system



将一整件衣服的裁片挂在衣架上, 根据事先输入好的程序工段, 自动送到下一道工序操作员手里, 当生产员完成一个工序后, 只需轻按控制钮, 吊挂系统就会自动将衣架转送到下一个工序站。

All pieces of one cloth, hanging on the hanger, according to a pre-entered process, can be automatically sent to the next process operator's hand. When completing a process, simply press the control button, the hanger system will automatically transfer the hanger to the next process station.

特点 / Traits :

- 1、电源自动过载保护, 安全节能;
- 2、工业全钢传动系统, 单节承重可以达到45KG;
- 3、横梁、立柱采用2mm型材, 增加稳定性和承重;
- 4、ABS分体式五抓衣架, 能负载大量衣片, 分体式结构可以随意更换;
- 5、软件功能强大, 适应小批量多品种订单, 可选配 ipad 可视化触摸屏, 实现定制化生产;
- 6、以太网数据通讯, 传输速度快;
- 7、故障容错能力强, 单个工作站故障维修, 不影响其它站正常工作。

- 1.automatic overload protection of power, safe and energy-saving
- 2.All steel transmission system, single section load can reach 45KG
- 3.Adopt 2mm profiles for Beams and columns, increase stability and load-bearing
- 4.Powerful function of software, adjust to small batch orders, IPAD visualized touch screen visualized for selection, to achieve customized production.
- 5.Fast transmission speed of data communications with Ethernet
- 6.Strong Fault tolerance, repair single workstation and without affecting other stations usual work.

适用于 / Application :



牛仔
Jeans



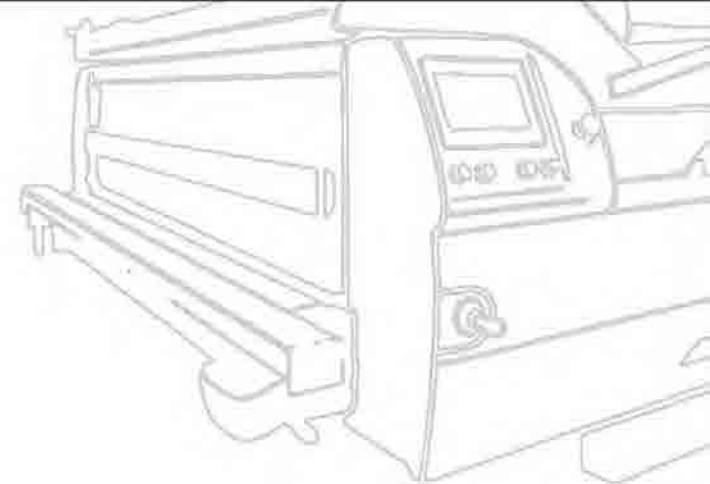
羽绒服
Down Jacket



T恤
T-shirt



梭织
Woven



智能吊挂系统
Intelligent Hanging system

Ed3000吊篮式吊挂系统 DE3000 basket hanger system

专业用于女士文胸\各式内裤以及手包\鞋帽等小物件的缝制流水

Professionally used for the sewing of small items such as ladies' bras/various underwear and handbags/shoes



特点 / Feature :

- 1、可将不易夹的小尺寸衣片放在篮子内，进行缝制流转；
- 2、在缝制流水线上，篮子在车缝工作区，停留在机台加工区左上方，篮口倾斜45度，对准操作工，方便拿取。

1. Put the small piece cloth that difficult to sew into the basket to sew and transmit
- 2.the basket is in the sewing work area, stay in the top left of the machine processing area, Tilt 45 degrees, which is aligned to workers and easy to fetch.

适用于 / Application :



文胸
Bra



鞋子
Shoes



内裤
Panties



帽子
Hats

智能吊挂系统
Intelligent hanger system

EL3000/EL5000 链式吊挂系统
EL3000/EL5000 chain hanger system

可控升降链式系统，适用于较长纺织以及窗帘、床单被套
Controllable lift chain system, suitable for longer textile and curtains, sheets quilt.



特点 / Feature :

- 1、链式吊挂系统坚固、厚重、稳定、高承载力；
 - 2、可以完全支撑被子等重物挂靠流转；
 - 3、EL5000: 机械防止出现双衣架；
 - 4、EL5000: 独特机械结构，杜绝一个推片出现多个衣架。
- 1.Sturdy, heavy, stable, high bearing capacity
 - 2.It can support the quilt and other heavy objects
 - 3.EL5000 : Prevent double hangers
 - 4.EL5000 : Unique mechanical structure, put an end to the emergence of a number of racks

适用于 / Application :



床上用品
Bed Linings



窗帘
Curtains



大衣/连衣裙/婚纱礼服
Coats/dresses/wedding dresses



西服
Suits

智能仓储
Intelligent storage



特点 / Feature :

- 1、适用于运输各种商品贯穿生产仓库的各个地方。它既可以安装在地面的支柱上，同样可以挂在天花板上；
 - 2、运行方向不受限制；
 - 3、滑轮小车可以在任何地方进入或者离开轨道；
 - 4、半自动转向器，二路，三路以及万向转向器保证自动全方位转向；
 - 5、最佳利用空间的高度；
 - 6、随时可以进行模块化的自动化；
 - 7、导轨由表面氧化，钝化防锈处理的铝合金制造(AP110)。
- 1.Apply to transporting the products and run through anywhere in the production warehouse. Which can be installed in the pillar on the ground, also can be hanged on the ceiling.
 - 2.Moving directions without limitation.
 - 3.Pulley cars enter into or out the track at anywhere.
 - 4.Semi-auto steer gear, second path, third path and universal steer gear guarantee omnibearing turning.
 - 5.Take fully use of the space height.
 - 6.Conduct automation of modularity at any time.
 - 7.Guide rail is made of aluminium alloy(AP110), which is surface oxidation and deactivation, rust prevention.

长园和鹰——融资租赁
Financial leasing



设备租着用 / Renting the equipment

立足产业，汇集金融，长园和鹰积极为资金困难的客户提供更快捷灵活的资金扶持计划。对于和鹰集团旗下各分公司符合条件客户最高优惠至零首付。起租后一次性开具全额增值税发票。和鹰租赁为新设立的企业、信用状况较差的中小企业提供了融资机会，积极为所有客户提供更多高附加值的融资解决和配套方案。零首付零门槛，低利息，1年~3年分期支付。

Based on the industry, assembled financial capital. YINGROUP provide faster and flexible financial support to our customers who are trapped in financial difficulty. The highest favorable discounts up to zero down-payment for the eligible customers. Issue full VAT invoice after the leasing day. YIN' s leasing provide the companies which are belong to new set up and bad credit situation with leasing opportunities. It offers more accessory projects with high added value to all customers. Zero down-payment, zero threshold and low interest, pay by instalment from 1-3years.

资金雄厚 诚信务实 / Financially strong, honesty pragmatic

和鹰租赁凭借强大的资金后盾，可以为纺织服装客户提供大额、中长期资金，为纺织服装客户的持续发展提供有力保障，成为纺织企业值得长期信赖的合作伙伴。

YIN' s leasing based on strongly financial support that supply large amount and mid-and-long term capital support with textile and garment customer, which guarantee security for their continue development. YINGROUP is long term and reliable co-partner for textile company.

高效便捷 创新服务 / Efficient and convenient, innovative service

和鹰租赁建立起一套专业化操作流程，使得项目手续更加便捷、高效，更加符合客户的专业需求与发展需求。和鹰租赁依托公司的综合实力，和鹰租赁不仅提供常规的融资服务，还可以根据客户不同的发展阶段量身定制资金解决配套方案。

YIN' s leasing create a set of professional operate process, the programme procedure become more convenient and effective, so that it can meet customers' speciality and development demand. Yin' s leasing rely on group' s comprehensive strength, not only offer regular financing service, but also customize suitable fund solving solutions according to customers' different developing stage.

专业团队 覆盖全国 / Professional teams cover all China

和鹰租赁团队在纺织服装行业具有资深的从业背景以及丰富的行业经验；公司总部设在上海，并在北京、青岛、郑州、武汉、广州、深圳、厦门、杭州等多个中心城市设立办事机构，形成了辐射全国的客户服务网络。

Yin' s leasing team has senior background and rich experience in the textile&garment industry, the head quarter located in Shanghai, and set up offices at many center cities, including Beijing, Qingdao, Zhengzhou, Wuhan, Guangzhou, Shenzhen, Xiamen, Hangzhou. The customer service net radiate all over China.

三维人体扫描 3D body scan system



固定式三维人体测量仪
Fixed dimensional body scanner



便携式三维人体测量仪
frame type dimensional body scanner



框架式三维人体测量仪
Frame type



户外式三维人体测量仪
Outdoor type

特点 / Feature :

1. 自动测量人体尺寸；
2. 4-20秒完成测量，测量速度快；
3. 采集200多项人体各部位尺寸数据；
4. 在品牌成衣销售、教育、O2O服装电商领域应用广泛。

1. Automatic measurement of body size.
2. Fast speed, complete measurement differ from 4 to 20 seconds.
3. Collect the body size data up to more than 200.
4. Widely used in brander adult sale, education and O2O garment e-commerce business area.

技术参数 / Technical parameter	HY-3D462A	HY-3D430	HY-3D470A
采集单元 / Collecting unit	16	3	2
扫描范围 / Scan area	2100x900x700(mm)	2100x900x600(mm)	2100x1200x600(mm)
测量方法 / Measurement methods	红外线 / Infrared	激光(2M级)扫描 / Laser line(2M level) scanning	红外线 / Infrared
扫描时间 / Scan time	4s	4~8s	20s
设备安装尺寸 / Installation size	1900x2100x2200(mm)	3000x4000(mm)	1500x2200(mm)
标定时间 / Calibrated time	15min	5~10min	10min
装箱尺寸 / Packing size	1220x2300x1100(mm)	840x570x340(mm)	1700x650x500(mm)
电源 / Power supply	单相220V/50Hz/1500W	单相220V/50Hz/200W	单相220V/50Hz/600W

*注：1. 2M级是指100~700nm波长的可见光激光，通过自然眨眼即可保护眼睛，对人体无伤害。

2. 红外线是波长介于微波与可见光之间的电磁波，波长在760纳米至1毫米之间，是波长比红光长的非可见光。覆盖室温下物体所发出的热辐射的波段，对人体无伤害。

*Note: 1. 2M class refers to a visible laser with a wavelength of 100 to 700nm, people can protect the eyes by natural eye blinking and does not harm the human body.

2. Infrared is an electromagnetic wave whose wavelength is between microwave and visible light. The wavelength is between 760 nm and 1 mm. It is a non-visible light with a longer wavelength than red light. The band, covering the thermal radiation emitted by the object at room temperature, does not harm the human body.

试衣魔镜系统 Magic fitting system



YDT-3D-620

功能 / Function :

虚拟试衣功能、集形象搭配，互动分享购物和支付。

Functions: Virtual fitting function, set up the image collocation, interactive share shopping and payment function.

特点 / Feature :

1. 可进行三维试穿、选择、比较、线上购物，真实展现消费者的穿着效果，为消费者提供一种互动有趣、实效的现场高质量试衣体验；
2. 可在店铺商场等终端为消费者带来沉浸式的购物乐趣，也能为电商平台带来绝佳的线下体验，是构建O2O购物模式的理想解决方案。

1. It can be 3 d fitting, selection, comparison, online shopping, the real show consumers wearing effect, provide consumers with an interactive fun, pragmatic quality the fitting experience ;
2. It can bring immersive shopping fun to consumers in the store and other terminals, which can bring a great offline experience to e-commerce platform and an ideal solution to build O2O shopping mode.

运行平台 / Operation platform	Windows 7 64位专业版 (以上) / Windows 764 Professional Edition (or above)
湿度需求 / Humidity requirement	20%~80%
温度要求 / Temperature requirement	10°C~50°C
网络要求 / Network requirements	10M宽带拨号网络 / 10M broadband dial-up network
电源 / Power supply	1KW供电 ; 220V/50HZ
工作空间 / Working space	≤ 1*1*2(L*W*H单位:米) / ≤ 1*1*2(L*W*H unit: m)

智能人模

Smart human model

一个革命性高效的机械人体模型，使用户只需点击几下计算器就可以调整和实现数百人体测量和形状。

A revolutionary effective mechanical body model, let the users adjust and realize hundreds of body measurement and shape just by click the calculator.



特点 / Characteristics:

1. 可调节机身尺寸和形状； 2. 可调节腰围、胸围、腰围、臀围和身高参数等； 3. 适合不同风格的时装； 4. 容易使用，易于维护，节省空间，经济； 5. 用一个可以测试不同尺寸的服装

三维足部测量仪

Three dimensional foot measuring instrument

功能 Functions	全自动三维足部数据测量采集系统功能 full-automatic three-dimensional foot data acquisition and measurement system
原理 Theory	非接触式激光（2M级）结构光原理扫描 non-contact laser (2M class) structured-light measurement optical principle scan



YDT-3D-481

特点 / Feature :

1. 敞开式扫描，更加方便操作，抗干扰能力强，采用国内特有的滤光系统和抗干扰技术；
 2. 15秒内完成足部扫描及模型的建立，一键获取50多个脚部数据；精度高，可达±0.5mm；
 3. 可以多种文件格式输出，与后期各类鞋业软件无缝对接；可根据各领域的不同需求对足部各类尺寸进行扫描。
1. Open-type scanning, more convenient operation, strong anti-interference ability, with domestic special filtering system and anti-jamming technology ;
2. Within 15 seconds, the foot scan and model were completed, and more than 50 foot data were obtained by one key. Its measurement is high and the error is plus or minus 0.5mm ;
3. It can be exported in many kinds of file formats, and it seamlessly connects with all kinds of shoe industry software later. Various sizes of the foot can be scanned according to different requirements in various industries,

应用 / Application :

广泛应用于鞋类设计及定制，标准足部模型的建立、鞋类产品虚拟展示、医疗科研等相关领域
It is widely used in footwear design and customization, the establishment of standard foot model, virtual display of footwear products, medical research and other related fields

技术参数 / Specification :

采集单元 / Acquisition unit	8
扫描范围(mm) / Sweep range(mm)	150*150*300
测量方法 / Measuring method:	激光 (2M级) 扫描 / laser (2M class) scan
设备尺寸 (mm) / Equipment size (mm)	960*670*1400
电源 / Power supply	单相220V/50Hz/600W / single-phase 220V/50Hz/600W

AGMS 3D INDUSTRY 试衣软件

AGMS 3D INDUSTRY The fitting software

● 纸样设计系统 (PDS) / Paper Design System (PDS)

设计人员适用的软件，为设计师提供便利的样板制作。（包括放码推挡、智能读图、量体裁剪、排料等全部功能）。

The software is suit for designer, offer designer with convenient templet making. (including the functions like grading, intelligent picture read, cut via body size, layout.)

● 三维试衣 / 3D try on

将CAD样板转换成虚拟模特穿的3D服装，可直观看到服装的真实穿着效果。

Transform the CAD templet to 3D clothes to artificial model so that the clothes' visual effect present.

● 展平 / Flatten

在三维立体模型上直接进行设计，样本转换为CAD纸样，此功能为设计师在立体视图的情况下进行设计纸样。

Directly design on the basis of 3D model, the sample transformed into CAD pattern. This function guarantee the the designer make the pattern at the basis of stereo image.

● 虚拟走秀 / Virtual show

模特通过虚拟走秀，设计师可了解服装面料在人体运动时的物理特点及服装风格。

The virtual show makes designer know the fabric' s physical characters and clothes style when people move.

● 设计元素的运用 / Application of design element

在AGMS INDUSTRY 3D试衣软件中，用户能模拟大量的设计元素：

- ◆ 纽扣、拉链、铆钉、搭扣等硬件
 - ◆ 褶皱、褶带、夹层、贴边等设计元素
 - ◆ 服装配件、对条对格及印花效果.....
- 面料的物料性能，包括纹理、垂坠感、颜色、皮革质感等等
效果可在软件中模拟效果。

In the AGMS INDUSTRY 3D fitting software, the user can simulate mass of design element:

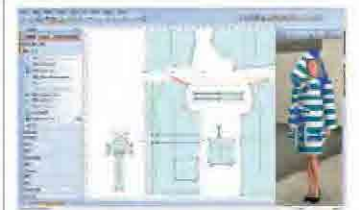
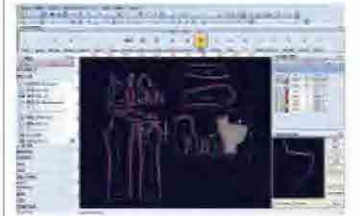
- Hard ware like button, zipper, rivet, buckle.
- Design element like drape, ruche, interlayer, welt.
- clothes accessories, lattice and printing effect.

All the effects of the cloth physical character like vein, draping, color and leather texture can be stimulated in the software.

● 模特库 / Model base

无论民族、种族、性别、年龄、还是面部表情、站立姿态.....软件提供详尽的模特库信息。参数化的三维模特库，提供50多种可调节的功能，还可根据客户要求，将可调节的功能增加到100多种。可确保模特符合特殊尺码及颜色要求。

No matter what nationality, race, gender, age and facial expression, stance is, can the software offer detailed model base information. Parameterized 3D model base can provide more than 50 adjustable functions, also, if according to customer' s demand, the functions can be added to more than 100 to ensure the specific size and color meet model' s requirement.



全面解决方案—产业格局

Total Solution of the industry pattern



全面解决方案 / Total Solution

长园和鹰通过软硬件方案整合，以智能化，信息化和自动化技术为支撑，将服装线上门店定制系统和线下智能工厂生产端无缝连接起来，成为全球唯一一家实现服装智能制造和云平台全流程贯通并成功实施的方案提供商。

YIN through the integration of software and hardware solutions, and supported by intelligent, informationized and automated technologies, and seamlessly connects the apparel online store customization system with the offline intelligent factory, to become the world's only solution provider that realizes the whole process of connecting with clothing intelligent manufacturing and cloud platform.

全面解决方案—大数据平台 (线上)

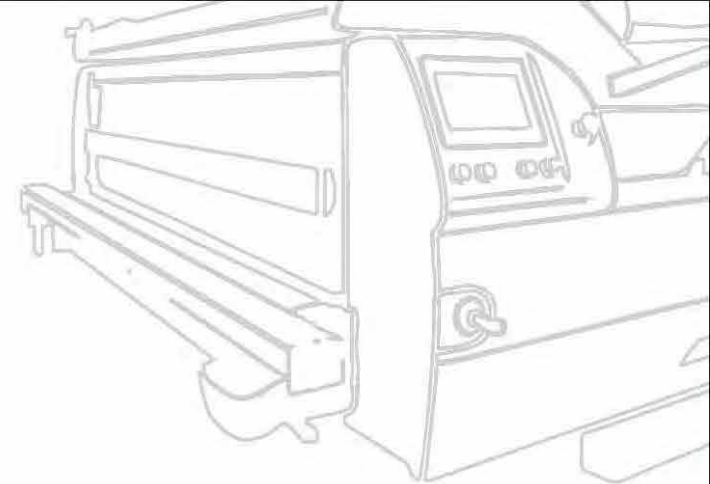
Total Solution-Big Data Platform (Online)



工业4.0 / Industry 4.0

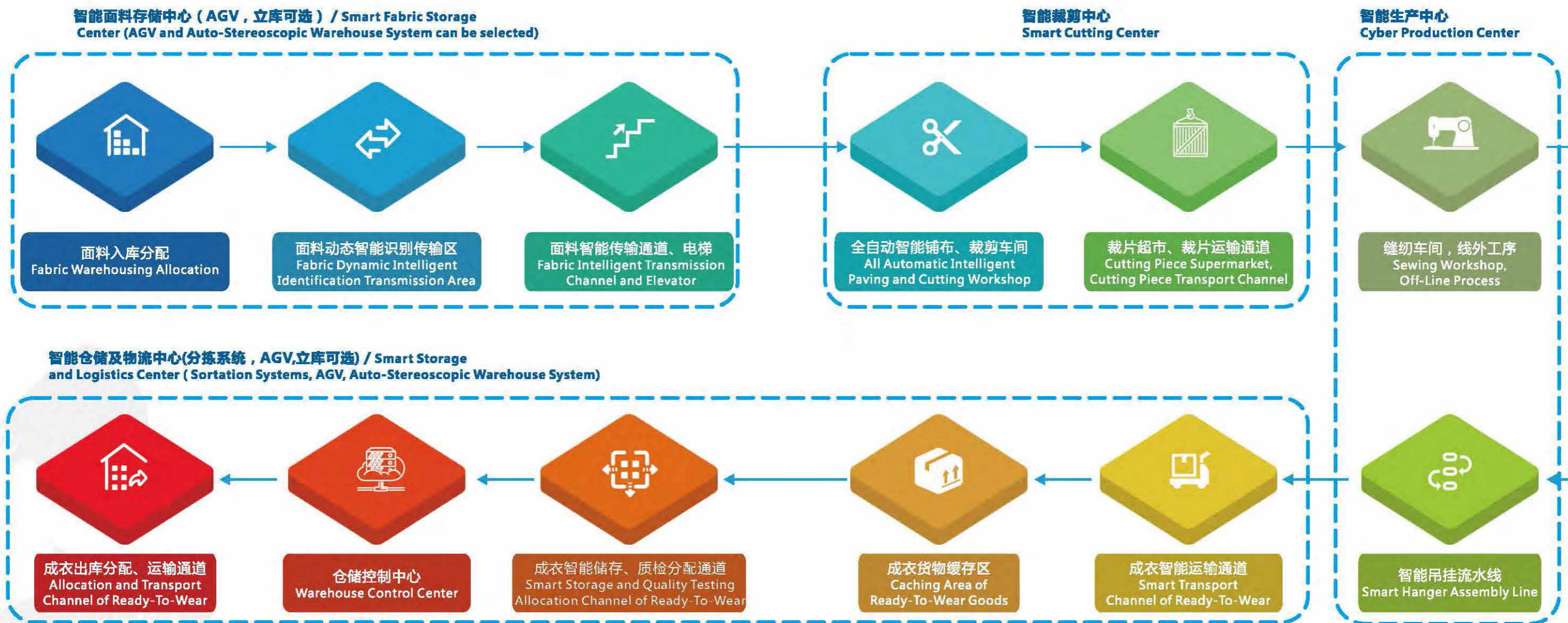
长园和鹰率先运用“工业4.0”和“互联网+”时代的智能制造、大数据等主流技术，综合各类软件系统，把“未来工厂”模式在服装、箱包、鞋帽、汽车内饰、航空航天、家具等领域变成了现实，使生产不仅实现了不落地的智能化、信息化，而且能满足个性化定制与批量生产的各种需求，从而为企业真正实现智能生产、大幅度提高生产效率、提升产品质量、节省资源提供可靠保障。

YIN take the lead in using intelligent manufacturing, big data and other mainstream technologies in the background of "Industry 4.0" and "Internet plus initiative". It has turned the model of "future factory" into reality in clothing, bags, shoes and hats, car interiors, aerospace, furniture and other fields. It not only realizes the intellectualization and informationization of production and makes the product not touching to the ground in productive process, but also meets the needs of customization and mass production. This will provide reliable guarantee for enterprises to truly realize intelligent production, greatly improve production efficiency, improve product quality and save resources.



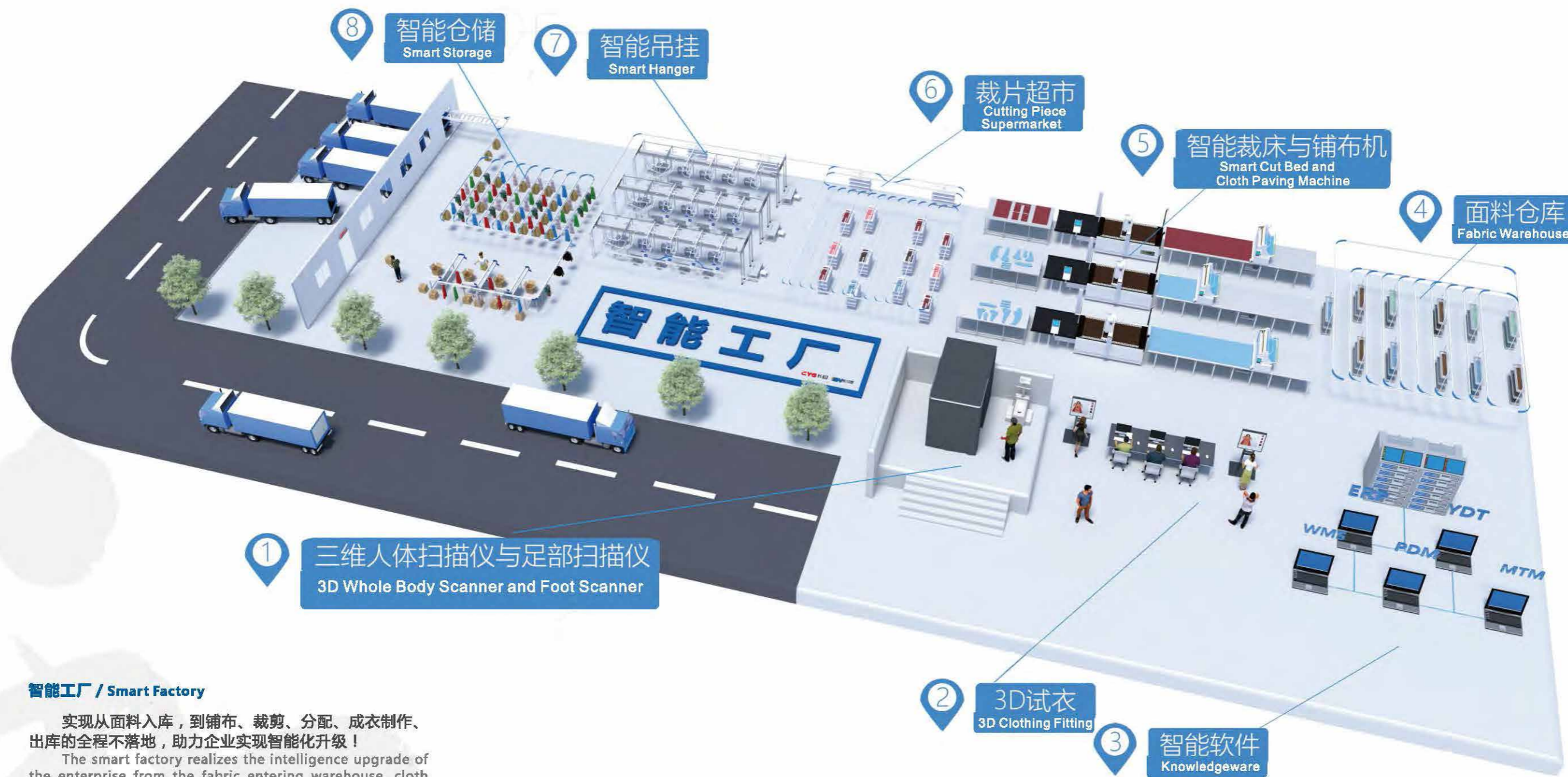
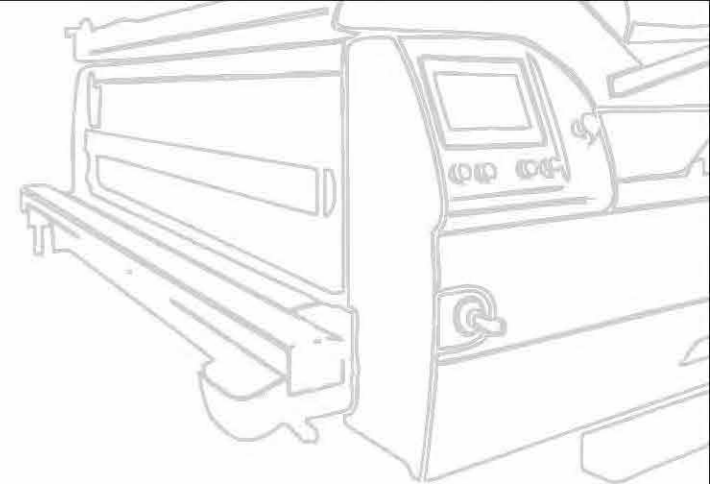
全面解决方案 - 智能工厂运作流程 (线下)

Total Solution-Smart Factory Operation Process (Offline)



全面解决方案—智能工厂(线下)

Total Solution-Smart Factory (Offline)



智能工厂 / Smart Factory

实现从面料入库，到铺布、裁剪、分配、成衣制作、出库的全程不落地，助力企业实现智能化升级！

The smart factory realizes the intelligence upgrade of the enterprise from the fabric entering warehouse, cloth paving, cutting, allocation, ready-to-wear production, until to delivery. The product will be completed in the whole production process of the park.

ERP—企业计划资源管理系统

ERP-Enterprise Resource Planning Management System



将ERP系统中的数据统计到情报战情室。可以使用大屏幕输出设备实时投放。左图为全国数据统计可查看(销量演变)(订单产品占比)(会员信息)(订单实时情况)等多项数据。

The data in ERP system can be calculated in the intelligence war room, and it can be put into real time by using large screen output device. On the left, we can see a number of data such as national data statistics (sales evolution)(order product proportion)(member information)(real-time order situation).



精确到工厂的智能智造战情室。可查看(产线产能)(流水线/天)(订单进度)(生产完工率)等多项数据。

Checking out the precise factory's Intelligent Manufacturing intelligence war room, can view (production line capacity)(pipeline/day order progress) production completion rate) and other data.



精确到商品的生产进度战情室。可查看单款商品的(完成状况)(工序耗时)(预定交期)等多项数据。

Checking out the precise production schedule war room of the commodity, can view the single product (completion status (process time)(scheduled delivery) and other data.

WMS—智能仓储管理系统

WMS-Smart Warehouse Management System

WMS (WareHouse Management System) 仓储管理系统:通过入库业务、出库业务、仓库调拨、库存调拨和虚仓管理等功能,对批次管理、物料对应、库存盘点、质检管理、虚仓管理和即时库存管理等功能综合运用的管理系统,有效控制并跟踪仓库业务的物流和成本管理全过程,实现或完善的企业仓储信息的管理。

WMS(Warehouse Management System) through the functions of storage business, outbound business, warehouse allocation, inventory allocation and virtual warehouse management, and the management system of batch management, material correspondence, inventory counting, quality inspection management, virtual warehouse management and real-time inventory management, to effectively control and track the entire process of logistics and cost management of warehouse operations, and achieve or improve enterprise warehouse information management.

WMS仓储管理系统的无缝对接 Seamless Connection of Warehouse Management System

WMS仓储管理系统可以通过中间库、WebServices等接口方式与ERP、MES、SAP等系统进行无缝对接,并将出入库的信息通过接口反馈至以上系统;

Warehouse management system owns the ability to connect the ERP,MES,SAP and similar systems seamlessly through API such as middle base,WebService. And upload feedback of the in-out base through the systems mentioned.

WMS仓储管理系统也可以通过其他接口方式将任务信息下达至WCS系统中,可以与堆垛机、穿梭车、输送线等设备进行对接;

Warehouse management system owns the ability to send the received message to the WCS system by other APIs while connected with piler,shuttle bus,pipeline.

WMS的功能不仅可以满足用户的日常使用,还可以根据用户的特殊新要求定制化的开发,进而贴近用户最便捷的使用;

Warehouse management system owns the ability to develop new functions for customers not only the existed functions.

WMS仓储管理系统信息化管理

Information Management of Warehouse Management System

通过WMS进行管理,操作人员无需考虑货物的品名等具体信息,可以通过辅助使用PDA等扫描货物即可,一旦扫描结果与系统反馈不符,WMS系统则有相应的机制引导工作人员进行下一步操作,无需工作人员耗费精力去思考解决相应的问题。这样的方式将最大限度的提升人员的作业效率,并提高仓储作业的准确性。

WMS系统能够将仓库作业中的入库、出库、盘点、调拨、退库等环节进行全面的管控,将不规范,不符合流程以及订单内规定的操作杜绝,以最小的成本实现仓库作业流程的规范化。

Through WMS management, operators do not need to consider the specific information such as the name of the goods, and they can scan the goods by using PDA and other services. Once the scan results are inconsistent with the feedback from the system. The MS system has a corresponding mechanism to guide the staff to carry out the next operation, without the need for staff to spend time thinking about solving the corresponding problems. This approach will maximize the personnel's operating rate and improve the accuracy of the warehousing industry.

WMS system can fully control the storage, outbound, inventory, allocation and withdrawal of warehouse operations. It will eliminate the operations, which are non-standard, not conforming to the process, or not in conformity with the requirements stipulated in the order, and then realize the standardization of warehouse operation process with minimum cost.

WMS仓储管理系统信息化管理

Information Management of Warehouse Management System

WMS系统全面实现物流全局库存的可视化，通过集中式管理，掌握所有仓库库存，从不同角度查看库存总量、分布情况、库存预警服务，以及计划在途、实际在途库存等。实现精确的库龄管理，库存周转控制，对各仓库之间的调拨和库内移位提供依据和支撑。

WMS system comprehensive logistics global inventories of visualization, through the centralized management, to master all the warehouse inventory, from different angles to check the inventory amount, allocation and inventory early warning service, and the situation of inventory planned on the way and the inventory actually in transit., etc.

主要功能 / Main functions:

- 1.多用户权限角色管理和详细操作日志；
- 2.多种存储策略备选，如先进先出，就近入库，分区存放，紧急优先等；
- 3.物料的批次管理和全程跟踪。提供物料短缺，超储，呆滞，积压报告，提供保质期预警信息等；
- 4.提供物流任务分类统计报告；
- 5.提供各类综合信息查询，库存信息，仓位状态信息，物料属性信息，计划信息，出入库信息等信息的查询。

1. Multi-user rights role management and detailed operation log;
2. Multiple storage strategies, such as first-in-first-out, nearest storage, partition storage, emergency priority, etc;
3. Batch management and whole-process tracking of materials. Provide material shortage and overstock, delay, backlog report, provide warranty period information, etc;
4. Provide logistics task classification statistics report;
5. Provide all kinds of comprehensive information inquiry, inventory information, warehouse status information, material property information, plan information, and information of enter and out warehouse, and other information.



全流程智能输送，分拣解决方案

Total Access Intelligent Conveyor and Automated Sorting Solution

全流程智能输送系统广泛应用于包括服装行业，汽车制造业，纺织工业等各行各业。在全球已经完成的项目超过2500个。在金山，红爱，昊宝三家服装智能工厂设计，制造，安装了全套的智能输送，分拣系统，开创了全球智能服装系统的先河。

Total Access Intelligent Conveyor System is widely used in the clothing industry, automobile manufacturing industry, textile industry and other industries. It has completed more than 2,500 projects worldwide. In the design and manufacturing line of three clothing intelligent factories in Jin Shan, Hong Ai and Wu Bao, a complete set of intelligent conveyor and automated sorting system has been installed, which pioneered the world's intelligent clothing system.

全流程智能输送，分拣系统 Total Access Intelligent Conveyor and Automated Sorting System



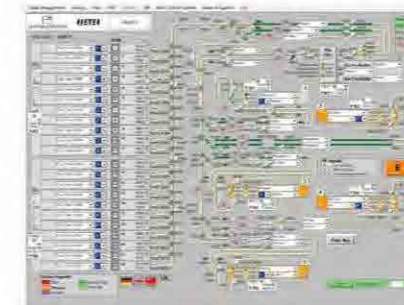
铝制导轨系统
Aluminum Guideway Transit System



小车Trolley Lt50 (双轨道系统)
Trolley LT50 (Dual Track System)



小车编组 (仓库)
Trolley Marshalling (Warehouse)



自动控制/自动检查
Automatic Control/Automatic Check



锁链编队 (可循环)
Chain Type Formation Repeatable



TEF 编队带柔性推进
TEF Formation Belt Flexible Propelling

WMS仓储管理系统信息化管理

Information Management of Warehouse Management System

智能输送系统可以根据客户要求和产品特点，提供不同的解决方案。运行的速度，挂具的设计，行驶路线的布局，各种承载方案；比如：CDDC为长距离大数量的运输；小车系统用于出入库，发货，库存；单挂系统用于小批量，单件的输送，分拣和挑选。针对于客户的特殊要求，还有各种特殊的解决方案。

针对不同楼层高度的物体传输，有斜度传输系统，垂直传输系统。根据输送的物体的特性，也有不同的方案供客户选择。有轨道式，链条式等等产品。

Intelligent conveyer system can provide different solutions according to customer requirements and product characteristics. It has corresponding solutions on the speed of running, the design of the hanging tools, the layout of the driving route, and the problems of various bearing schemes. For example, CDDC is used as a transport for long distances; The Trolley system is used for enter and out warehouse management, delivery and inventory. Product-oriental system for small - batch, single - piece delivery, sorting and selection. And there are special solutions are available for specific customer requirements.

There is an inclined transmission system and a vertical transmission system for objects with different heights. According to the characteristics of the transported objects, there are different schemes for customers to choose. For example, there are orbital, chain, and so on.

智能输送系统—KF链输送 /

Intelligent Conveyer System- KF Chain Transport

用于连接同一平面的输送，以及远距离的材料运输。

1. 输送单一 滑轮车，以及 整列滑轮车
2. 运送可逆性，（双向运输）
3. 轮链用齿轮传输。在塑料导轨上运行。
4. 坡度斜度小于4°
5. 输送速度:10 m / 分钟 (max. 20m/分钟)
6. 驱动功率: 0,55kW / 400 V

Used to connect the same plane for transmission and long distance material transport

1. Convey single pulley, and entire column pulley
2. Two-way transportation
3. Wheel chain transmission with gears, running on plastic rails
4. Slope is less than 4 degree
5. transfer speed: 10m/min (max 20m/min) Driving power

智能输送系统—柔性推进输送系统 /

Intelligent Conveyer System-Flexible Propeling System

适用于货物在两个平面间的传输。

1. 输送单一的 滑轮车，或者整列滑轮车。
2. 可逆的，可以前进和后退。
3. 轮链用齿轮传输。在塑料导轨上运行。
4. 斜度 26° 或者 30°
5. 爬坡速度：10 m / 分钟 (max. 16m/分钟)
6. 驱动功率: 1,1 kW / 400 V

Suitable for the transfer of goods between two planes

1. Convey single pulley, and entire column pulley
2. Reversible, can move forward and backward
3. Wheel chain transmission with gears, running on plastic rails
4. Slope is 26 degree or 30 degree
5. transfer speed: 10m/min (max 16m/min)
6. Driving power

和谐共生 合作共赢

Harmony & Common Survival, Cooperation & Double-Win

长园和鹰望与您达成合作，共同推动智能制造惠及全球！

CYG & Yin Group will collaborate with you to jointly promote smart manufacturing to benefit the world

一流的发展速度

Fast development speed

一流的企业形象

First-class corporate image

为了自己忠实而尊贵的客户

For faithful and precious customers

长园和鹰

CYG & Yin Group

奉献极致、专业、高效的服务

Offer extreme, efficient, professional service

挑战未来

Challenge the future

我们永不止步

We never stop

自强不息、拼搏进取

Self-improvement and hard work

长园和鹰竭诚为您提供量身定制的全面解决方案

CYG & Yin Group Dedicated to provide you with a tailor-made comprehensive solution